

For Research Use Only

MTMR2 Monoclonal antibody, PBS Only



Catalog Number: 67312-1-PBS

Featured Product

Basic Information

Catalog Number:

67312-1-PBS

Size:

100ug , Concentration: 1 mg/ml by Nanodrop;

Source:

Mouse

Isotype:

IgG2b

Immunogen Catalog Number:

AG28413

GenBank Accession Number:

BC052990

GeneID (NCBI):

8898

UNIPROT ID:

Q13614

Full Name:

myotubularin related protein 2

Calculated MW:

73 kDa

Observed MW:

66-73 kDa

Purification Method:

Protein A purification

CloneNo.:

1B11B7

Applications

Tested Applications:

WB, Indirect ELISA

Species Specificity:

Human, Pig

Background Information

MTMR2(myotubularin-related protein 2) is also named as KIAA1073 and belongs to the non-receptor class myotubularin subfamily, which is characterized by the presence of a phosphatase domain. It may regulate vesicular trafficking in Schwann cells (PMID:17880751) and its reversible phosphorylation represents a critical mechanism for regulating the subcellular localization of MTMR2(PMID:21372139). MTMR2 is a 73 kDa protein in its monomeric form and exist as a dimer within cells and the protein re-localizes to membranes in hypo-osmotic settings(PMID:16399794). Defects in MTMR2 are the cause of Charcot-Marie-Tooth disease type 4B1 (CMT4B1). MTMR2 has two isoforms with the molecular mass of 73 and 66 kDa.

Storage

Storage:

Store at -80°C.

Storage Buffer:

PBS Only

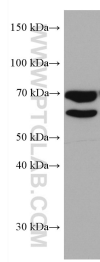
For technical support and original validation data for this product please contact:

T: 1 (888) 4PTGLAB (1-888-478-4522) (toll free in USA), or 1(312) 455-8498 (outside USA)

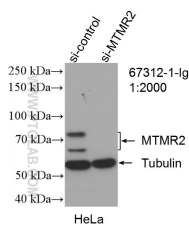
E: proteintech@ptglab.com
W: ptglab.com

This product is exclusively available under Proteintech Group brand and is not available to purchase from any other manufacturer.

Selected Validation Data



HeLa cells were subjected to SDS PAGE followed by western blot with 67312-1-Ig (MTMR2 antibody) at dilution of 1:3000 incubated at room temperature for 1.5 hours. This data was developed using the same antibody clone with 67312-1-PBS in a different storage buffer formulation.



WB result of MTMR2 antibody (67312-1-Ig; 1:2000; incubated at room temperature for 1.5 hours) with sh-Control and sh-MTMR2 transfected HeLa cells. This data was developed using the same antibody clone with 67312-1-PBS in a different storage buffer formulation.