

For Research Use Only

SSRP1 Monoclonal antibody

Catalog Number: 67313-1-Ig

Featured Product

1 Publications



Basic Information

Catalog Number:

67313-1-Ig

Size:

150ul, Concentration: 900 ug/ml by Nanodrop and 500 ug/ml by Bradford method using BSA as the standard;

Source:

Mouse

Isotype:

IgG2b

Immunogen Catalog Number:

AG8318

GenBank Accession Number:

BC005116

GeneID (NCBI):

6749

UNIPROT ID:

Q08945

Full Name:

structure specific recognition protein 1

Calculated MW:

81 kDa

Observed MW:

86 kDa

Purification Method:

Protein A purification

CloneNo.:

3D3H4

Recommended Dilutions:

WB 1:20000-1:100000

IHC 1:5000-1:20000

IF/ICC 1:50-1:500

Applications

Tested Applications:

WB, IHC, IF/ICC, ELISA

Cited Applications:

WB, IHC

Species Specificity:

human, mouse, rat

Cited Species:

human

Note-IHC: suggested antigen retrieval with TE buffer pH 9.0; (*) Alternatively, antigen retrieval may be performed with citrate buffer pH 6.0

Positive Controls:

WB : A431 cells, 4T1 cells, NCCIT cells, PC-12 cells, HeLa cells, HEK-293 cells, Jurkat cells, K-562 cells, HSC-T6 cells, LNCaP cells, NIH/3T3 cells

IHC : human ovary tumor tissue, human breast cancer tissue

IF/ICC : HepG2 cells,

Notable Publications

Author	Pubmed ID	Journal	Application
Chang Yang	37002567	Biomed Pharmacother	WB,IHC

Storage

Storage:

Store at -20°C. Stable for one year after shipment.

Storage Buffer:

PBS with 0.02% sodium azide and 50% glycerol, pH7.3

Aliquoting is unnecessary for -20°C storage

*** 20ul sizes contain 0.1% BSA

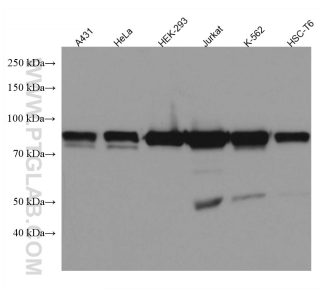
For technical support and original validation data for this product please contact:

T: 1 (888) 4PTGLAB (1-888-478-4522) (toll free in USA), or 1(312) 455-8498 (outside USA)

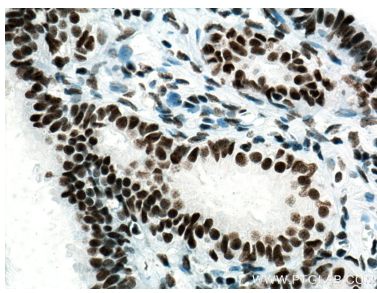
E: proteintech@ptglab.com
W: ptglab.com

This product is exclusively available under Proteintech Group brand and is not available to purchase from any other manufacturer.

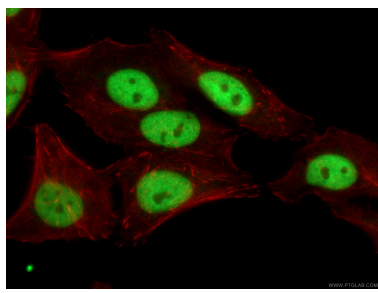
Selected Validation Data



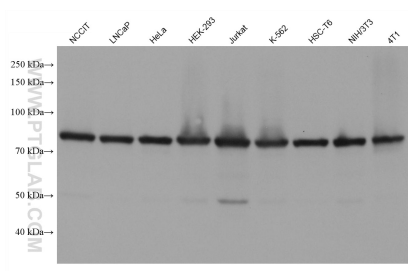
Various lysates were subjected to SDS PAGE followed by western blot with 67313-1-Ig (SSRP1 antibody) at dilution of 1:100000 incubated at room temperature for 1.5 hours.



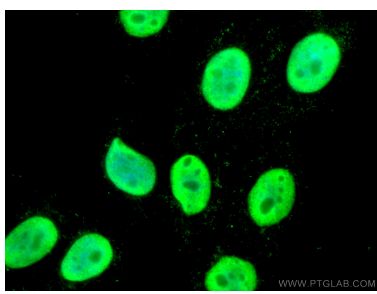
Immunohistochemical analysis of paraffin-embedded human ovary tumor tissue slide using 67313-1-Ig (SSRP1 antibody) at dilution of 1:10000 (under 40x lens). Heat mediated antigen retrieval with Tris-EDTA buffer (pH 9.0).



Immunofluorescent analysis of (-20°C Ethanol) fixed HepG2 cells using 67313-1-Ig (SSRP1 antibody), at dilution of 1:200 and CoraLite® 488-Conjugated AffiniPure Goat Anti-Mouse IgG(H+L).



Various lysates were subjected to SDS PAGE followed by western blot with 67313-1-Ig (SSRP1 antibody) at dilution of 1:100000 incubated at room temperature for 1.5 hours.



Immunofluorescent analysis of (4% PFA) fixed HepG2 cells using SSRP1 antibody (67313-1-Ig, Clone: 3D3H4) at dilution of 1:300 and CoraLite® 488-Conjugated AffiniPure Goat Anti-Mouse IgG(H+L).