

For Research Use Only

SSRP1 Monoclonal antibody, PBS Only

Catalog Number: 67313-1-PBS

Featured Product



Basic Information

Catalog Number:

67313-1-PBS

Size:

100ug, Concentration: 1mg/ml by
Nanodrop;

Source:

Mouse

Isotype:

IgG2b

Immunogen Catalog Number:

AG8318

GenBank Accession Number:

BC005116

GeneID (NCBI):

6749

UNIPROT ID:

Q08945

Full Name:

structure specific recognition protein
1

Calculated MW:

81 kDa

Observed MW:

86 kDa

Purification Method:

Protein A purification

CloneNo.:

3D3H4

Applications

Tested Applications:

WB, IHC, IF/ICC, Indirect ELISA

Species Specificity:

human, mouse, rat

Storage

Storage:

Store at -80°C.

Storage Buffer:

PBS only, pH7.3

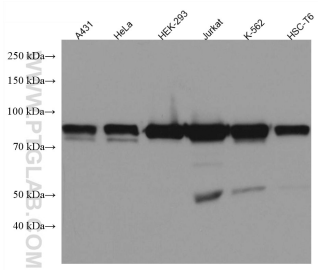
For technical support and original validation data for this product please contact:

T: 1 (888) 4PTGLAB (1-888-478-4522) (toll free
in USA), or 1(312) 455-8498 (outside USA)

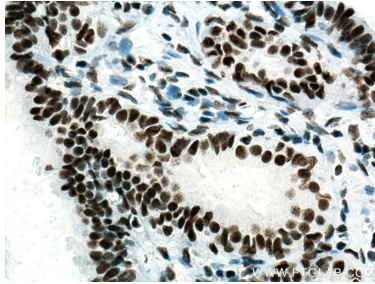
E: proteintech@ptglab.com
W: ptglab.com

This product is exclusively available under Proteintech Group brand and is not available to purchase from any other manufacturer.

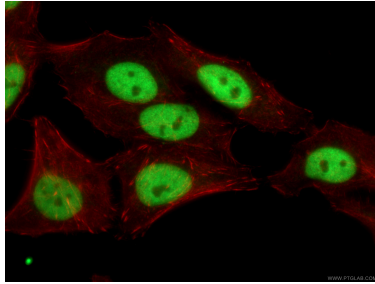
Selected Validation Data



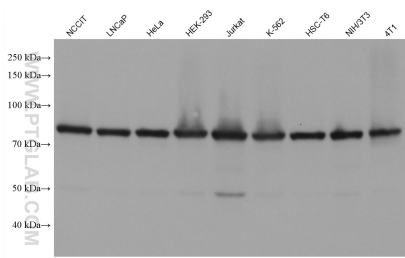
Various lysates were subjected to SDS PAGE followed by western blot with 67313-1-Ig (SSRP1 antibody) at dilution of 1:100000 incubated at room temperature for 1.5 hours. This data was developed using the same antibody clone with 67313-1-PBS in a different storage buffer formulation.



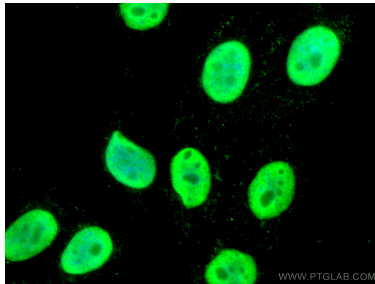
Immunohistochemical analysis of paraffin-embedded human ovary tumor tissue slide using 67313-1-Ig (SSRP1 antibody) at dilution of 1:10000 (under 40x lens). Heat mediated antigen retrieval with Tris-EDTA buffer (pH 9.0). This data was developed using the same antibody clone with 67313-1-PBS in a different storage buffer formulation.



Immunofluorescent analysis of (-20°C Ethanol) fixed HepG2 cells using 67313-1-Ig (SSRP1 antibody), at dilution of 1:200 and CoraLite® 488-Conjugated AffiniPure Goat Anti-Mouse IgG(H+L). This data was developed using the same antibody clone with 67313-1-PBS in a different storage buffer formulation.



Various lysates were subjected to SDS PAGE followed by western blot with 67313-1-Ig (SSRP1 antibody) at dilution of 1:100000 incubated at room temperature for 1.5 hours. This data was developed using the same antibody clone with 67313-1-PBS in a different storage buffer formulation.



Immunofluorescent analysis of (4% PFA) fixed HepG2 cells using SSRP1 antibody (67313-1-Ig, Clone: 3D3H4) at dilution of 1:300 and CoraLite® 488-Conjugated AffiniPure Goat Anti-Mouse IgG(H+L). This data was developed using the same antibody clone with 67313-1-PBS in a different storage buffer formulation.