

For Research Use Only

# EPHX2 Monoclonal antibody

Catalog Number: 67322-1-Ig **Featured Product**



## Basic Information

<b>Catalog Number:</b> 67322-1-Ig	<b>GenBank Accession Number:</b> BC013874	<b>Purification Method:</b> Protein A purification
<b>Size:</b> 150ul, Concentration: 2100 ug/ml by Nanodrop and 1000 ug/ml by Bradford method using BSA as the standard;	<b>GeneID (NCBI):</b> 2053	<b>CloneNo.:</b> 4H6C8
<b>Source:</b> Mouse	<b>UNIPROT ID:</b> P34913	<b>Recommended Dilutions:</b> WB 1:2000-1:10000 IHC 1:2000-1:8000 IF/ICC 1:200-1:800
<b>Isotype:</b> IgG2b	<b>Full Name:</b> epoxide hydrolase 2, cytoplasmic	
<b>Immunogen Catalog Number:</b> AG4870	<b>Calculated MW:</b> 63 kDa	
	<b>Observed MW:</b> 56-63 kDa	

## Applications

<b>Tested Applications:</b> WB, IHC, IF/ICC, ELISA	<b>Positive Controls:</b>
<b>Species Specificity:</b> human, pig	<b>WB:</b> LNCaP cells, A549 cells, Jurkat cells, pig liver tissue
<b>Note-IHC:</b> suggested antigen retrieval with <b>TE buffer pH 9.0; (*) Alternatively, antigen retrieval may be performed with citrate buffer pH 6.0</b>	<b>IHC:</b> human breast cancer tissue,
	<b>IF/ICC:</b> A549 cells,

## Background Information

EPHX2(Epoxide hydrolase 2) acts on epoxides (alkene oxides, oxiranes) and arene oxides and plays a role in xenobiotic metabolism by degrading potentially toxic epoxides. A number of single nucleotide polymorphisms (SNPs) in human EPX2 have been linked to cardiovascular disease risk, including increased risk of coronary heart disease, hyperlipoproteinemia, and type-2 diabetes (PMID: 14732757, 16595607, 14673705, 15845398, 17460077). It was observed in many tissues with the band of 63 kDa in the western blot. It has also been reported that the N-terminal domain might promote dimerization of EPX2 (PMID:21553642).

## Storage

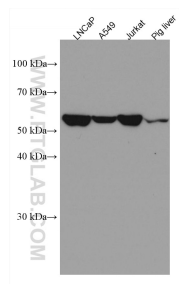
**Storage:**  
Store at -20°C. Stable for one year after shipment.  
**Storage Buffer:**  
PBS with 0.02% sodium azide and 50% glycerol pH 7.3.  
Aliquoting is unnecessary for -20°C storage

\*\*\* 20ul sizes contain 0.1% BSA

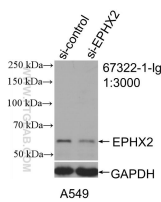
For technical support and original validation data for this product please contact:  
T: 1 (888) 4PTGLAB (1-888-478-4522) (toll free in USA), or 1(312) 455-8498 (outside USA)  
E: proteintech@ptglab.com  
W: ptglab.com

This product is exclusively available under Proteintech Group brand and is not available to purchase from any other manufacturer.

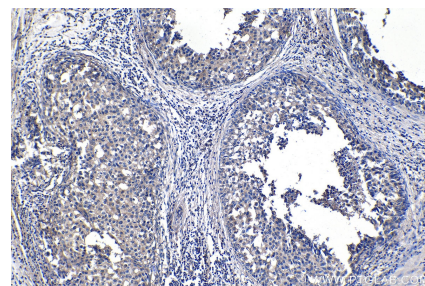
## Selected Validation Data



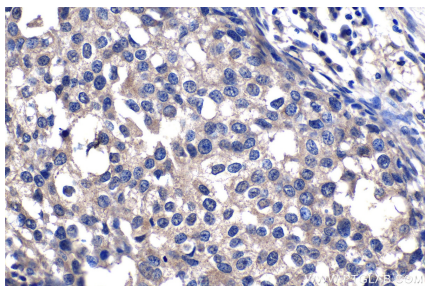
Various lysates were subjected to SDS PAGE followed by western blot with 67322-1-Ig (EPHX2 antibody) at dilution of 1:5000 incubated at room temperature for 1.5 hours.



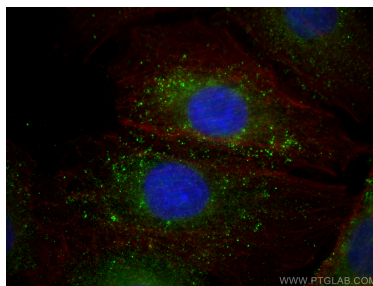
WB result of EPHX2 antibody (67322-1-Ig; 1:3000; incubated at room temperature for 1.5 hours) with sh-Control and sh-EPHX2 transfected A549 cells.



Immunohistochemical analysis of paraffin-embedded human breast cancer tissue slide using 67322-1-Ig (EPHX2 antibody) at dilution of 1:4000 (under 10x lens).



Immunohistochemical analysis of paraffin-embedded human breast cancer tissue slide using 67322-1-Ig (EPHX2 antibody) at dilution of 1:4000 (under 40x lens).



Immunofluorescent analysis of (4% PFA) fixed A549 cells using EPHX2 antibody (67322-1-Ig, Clone: 4H6C8 ) at dilution of 1:400 and Multi-rAb CoraLite® Plus 488-Goat Anti-Mouse Recombinant Secondary Antibody (H+L) (RGAM002), CL594-Phalloidin (red).