

For Research Use Only

Alpha SNAP Monoclonal antibody, PBS Only



Catalog Number: 67323-1-PBS

Basic Information

Catalog Number:

67323-1-PBS

Size:

100ug, Concentration: 1 mg/ml by
Nanodrop;

Source:

Mouse

Isotype:

IgG2b

Immunogen Catalog Number:

AG13180

GenBank Accession Number:

BC007432

GeneID (NCBI):

8775

UNIPROT ID:

P54920

Full Name:

N-ethylmaleimide-sensitive factor
attachment protein, alpha

Calculated MW:

33 kDa

Observed MW:

34 kDa

Purification Method:

Protein A purification

CloneNo.:

1E2A2

Applications

Tested Applications:

WB, IF, IHC, Indirect ELISA

Species Specificity:

Human, Pig, Mouse, Rat

Storage

Storage:

Store at -80°C.

Storage Buffer:

PBS Only

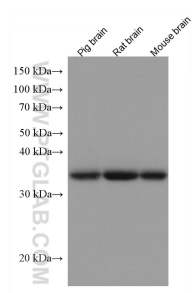
For technical support and original validation data for this product please contact:

T: 1 (888) 4PTGLAB (1-888-478-4522) (toll free
in USA), or 1(312) 455-8498 (outside USA)

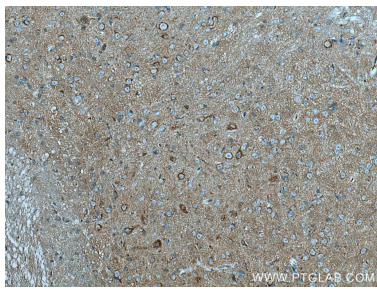
E: proteintech@ptglab.com
W: ptglab.com

This product is exclusively available under Proteintech
Group brand and is not available to purchase from any
other manufacturer.

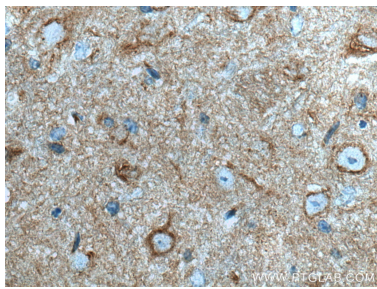
Selected Validation Data



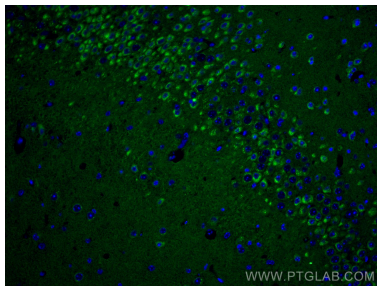
Various lysates were subjected to SDS PAGE followed by western blot with 67323-1-Ig (alpha-SNAP antibody) at dilution of 1:40000 incubated at room temperature for 1.5 hours. This data was developed using the same antibody clone with 67323-1-PBS in a different storage buffer formulation.



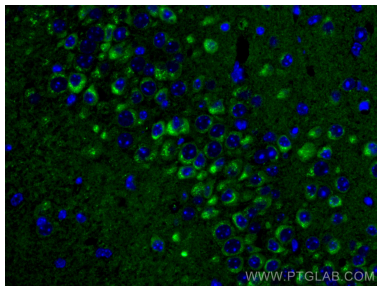
Immunohistochemical analysis of paraffin-embedded mouse cerebellum tissue slide using 67323-1-Ig (Alpha SNAP antibody) at dilution of 1:4000 (under 10x lens). Heat mediated antigen retrieval with Tris-EDTA buffer (pH 9.0). This data was developed using the same antibody clone with 67323-1-PBS in a different storage buffer formulation.



Immunohistochemical analysis of paraffin-embedded mouse cerebellum tissue slide using 67323-1-Ig (Alpha SNAP antibody) at dilution of 1:4000 (under 40x lens). Heat mediated antigen retrieval with Tris-EDTA buffer (pH 9.0). This data was developed using the same antibody clone with 67323-1-PBS in a different storage buffer formulation.



Immunofluorescent analysis of (4% PFA) fixed mouse brain tissue using Alpha SNAP antibody (67323-1-Ig, Clone: 1E2A2) at dilution of 1:400 and CoraLite®488-Conjugated AffiniPure Goat Anti-Mouse IgG(H+L). This data was developed using the same antibody clone with 67323-1-PBS in a different storage buffer formulation.



Immunofluorescent analysis of (4% PFA) fixed mouse brain tissue using Alpha SNAP antibody (67323-1-Ig, Clone: 1E2A2) at dilution of 1:400 and CoraLite®488-Conjugated AffiniPure Goat Anti-Mouse IgG(H+L). This data was developed using the same antibody clone with 67323-1-PBS in a different storage buffer formulation.