

For Research Use Only

# LAMR1,RPSA Monoclonal antibody

Catalog Number: 67324-1-Ig **1 Publications**



## Basic Information

<b>Catalog Number:</b> 67324-1-Ig	<b>GenBank Accession Number:</b> BC050688	<b>Purification Method:</b> Thiophilic affinity chromatograph
<b>Size:</b> 150ul , Concentration: 1900 µg/ml by Nanodrop and 1000 µg/ml by Bradford method using BSA as the standard;	<b>GeneID (NCBI):</b> 3921	<b>CloneNo.:</b> 2A9A1
<b>Source:</b> Mouse	<b>Full Name:</b> ribosomal protein SA	<b>Recommended Dilutions:</b> WB 1:5000-1:50000 IHC 1:500-1:2000 IF 1:400-1:1600
<b>Isotype:</b> IgM	<b>Calculated MW:</b> 33 kDa	
<b>Immunogen Catalog Number:</b> AG6190	<b>Observed MW:</b> 37-40 kDa	

## Applications

<b>Tested Applications:</b> IF, IHC, WB, ELISA	<b>Positive Controls:</b> WB : HeLa cells, HEK-293 cells, HepG2 cells, COLO 320 cells, Jurkat cells, HSC-T6 cells, NIH/3T3 cells
<b>Cited Applications:</b> WB	<b>IHC :</b> human lung cancer tissue,
<b>Species Specificity:</b> Human, mouse, rat	<b>IF :</b> HepG2 cells,
<b>Cited Species:</b> human	

**Note-IHC: suggested antigen retrieval with TE buffer pH 9.0; (\*) Alternatively, antigen retrieval may be performed with citrate buffer pH 6.0**

## Background Information

The ribosomal protein SA (RPSA), previously named 67 kD laminin receptor(67LR), 37 kD laminin receptor precursor (37LRP) and p40 ribosome-associated protein, is a multifunctional protein, that plays a role in a number of pathological processes, such as cancer and prion diseases. It is overexpressed in various cancer cell lines, and the level of the laminin receptor transcript is higher in colon carcinoma tissue and lung cancer cell line than their normal counterparts.

## Notable Publications

Author	Pubmed ID	Journal	Application
Lele Li	37070131	J Cell Mol Med	WB

## Storage

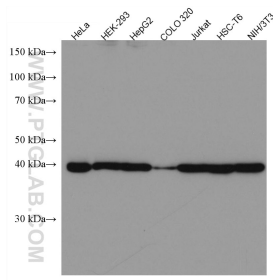
**Storage:**  
Store at -20°C. Stable for one year after shipment.  
**Storage Buffer:**  
PBS with 0.02% sodium azide and 50% glycerol pH 7.3.  
Aliquoting is unnecessary for -20°C storage

\*\*\* 20ul sizes contain 0.1% BSA

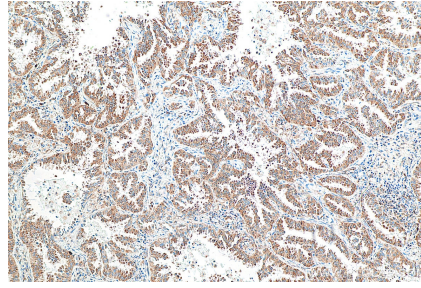
For technical support and original validation data for this product please contact:  
T: 1 (888) 4PTGLAB (1-888-478-4522) (toll free in USA), or 1(312) 455-8498 (outside USA) E: proteintech@ptglab.com W: ptglab.com

This product is exclusively available under Proteintech Group brand and is not available to purchase from any other manufacturer.

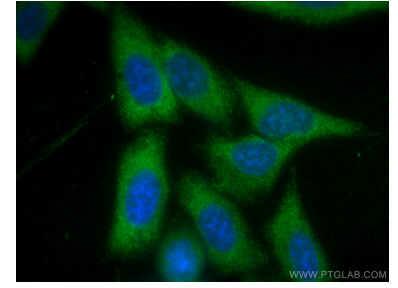
## Selected Validation Data



Various lysates were subjected to SDS PAGE followed by western blot with 67324-1-Ig (LAMR1,RPSA antibody) at dilution of 1:10000 incubated at room temperature for 1.5 hours.



Immunohistochemical analysis of paraffin-embedded human lung cancer tissue slide using 67324-1-Ig (LAMR1,RPSA antibody) at dilution of 1:1000 (under 10x lens). Heat mediated antigen retrieval with Tris-EDTA buffer (pH 9.0).



Immunofluorescent analysis of (-20°C Methanol) fixed HepG2 cells using LAMR1,RPSA antibody (67324-1-Ig, Clone: 2A9A1 ) at dilution of 1:800 and CoraLite®488-Conjugated AffiniPure Goat Anti-Mouse IgG(H+L).