

HSP20 Monoclonal antibody, PBS Only (Capture)

Catalog Number: 67327-1-PBS

Basic Information

Catalog Number: 67327-1-PBS	GenBank Accession Number: BC068046	Purification Method: Protein A purification
Size: 100ug , Concentration: 1mg/ml by Nanodrop;	GeneID (NCBI): 126393	CloneNo.: 1G7D2
Source: Mouse	UNIPROT ID: O14558	
Isotype: IgG2a	Full Name: heat shock protein, alpha-crystallin-related, B6	
Immunogen Catalog Number: AG10484	Calculated MW: 160 aa, 17 kDa	
	Observed MW: 17 kDa	

Applications

Tested Applications:
WB, IHC, IF/ICC, IF-P, Cytometric bead array, Indirect ELISA

Species Specificity:
human, mouse, rat, pig

Product Information

67327-1-PBS targets HSP20 as part of a matched antibody pair:

MP50552-2: 67327-1-PBS capture and 67327-4-PBS detection (validated in Cytometric bead array)

Unconjugated mouse monoclonal antibody pair in PBS only (BSA and azide free) storage buffer at a concentration of 1 mg/mL, ready for conjugation.

This conjugation ready format makes antibodies ideal for use in many applications including: ELISAs, multiplex assays requiring matched pairs, mass cytometry, and multiplex imaging applications. Antibody use should be optimized by the end user for each application and assay.

Background Information

Hsp20 is a member of the small heat shock superfamily of proteins that function as chaperones to prevent protein misfolding through adenosine triphosphate-independent processes. It is widely expressed but is most abundant in cardiac, skeletal, and smooth muscles. Phosphorylation of HSP20 at Ser16 was elevated in human failing hearts as well as in murine hearts after I/R injury indicating its cardioprotective function.

Storage

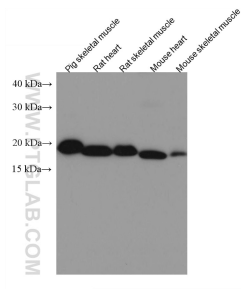
Storage:
Store at -80°C.

Storage Buffer:
PBS Only

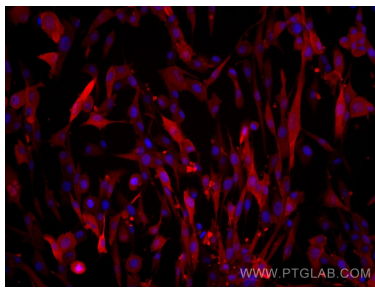
For technical support and original validation data for this product please contact:
T: 1 (888) 4PTGLAB (1-888-478-4522) (toll free in USA), or 1(312) 455-8498 (outside USA)
E: proteintech@ptglab.com
W: ptglab.com

This product is exclusively available under Proteintech Group brand and is not available to purchase from any other manufacturer.

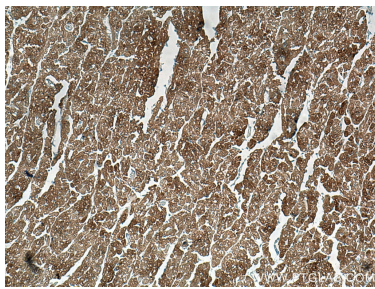
Selected Validation Data



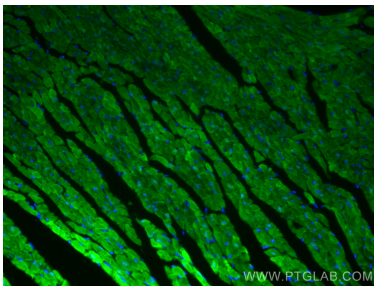
Various lysates were subjected to SDS PAGE followed by western blot with 67327-1-Ig (HSP20 antibody) at dilution of 1:10000 incubated at room temperature for 1.5 hours. This data was developed using the same antibody clone with 67327-1-PBS in a different storage buffer formulation.



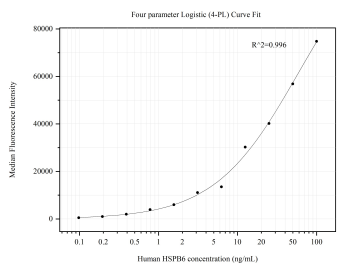
Immunofluorescent analysis of (4% PFA) fixed U-118 MG cells using HSP20 antibody (67327-1-Ig, Clone: 1G7D2) at dilution of 1:1700 and Multi-rAb CoraLite® Plus 594-Goat Anti-Mouse Recombinant Secondary Antibody (H+L) (Cat.NO. RGAM004). This data was developed using the same antibody clone with 67327-1-PBS in a different storage buffer formulation.



Immunohistochemical analysis of paraffin-embedded human heart tissue slide using 67327-1-Ig (HSP20 antibody) at dilution of 1:1000 (under 10x lens). Heat mediated antigen retrieval with Tris-EDTA buffer (pH 9.0). This data was developed using the same antibody clone with 67327-1-PBS in a different storage buffer formulation.



Immunofluorescent analysis of (4% PFA) fixed mouse heart tissue using HSP20 antibody (67327-1-Ig, Clone: 1G7D2) at dilution of 1:400 and CoraLite® 488-Conjugated AffiniPure Goat Anti-Mouse IgG(H+L). This data was developed using the same antibody clone with 67327-1-PBS in a different storage buffer formulation.



Cytometric bead array standard curve of MP50552-2, HSPB6 Monoclonal Matched Antibody Pair, PBS Only. Capture antibody: 67327-1-PBS. Detection antibody: 67327-4-PBS. Standard: Ag10484. Range: 0.098-100 ng/mL.