

For Research Use Only

KL Monoclonal antibody

Catalog Number: 67331-1-Ig **2 Publications**



Basic Information

Catalog Number: 67331-1-Ig	GenBank Accession Number: NM_004795	Purification Method: Protein A purification
Size: 150ul , Concentration: 2100 ug/ml by Nanodrop and 1000 ug/ml by Bradford method using BSA as the standard;	GeneID (NCBI): 9365	CloneNo.: 4D1G11
Source: Mouse	UNIPROT ID: Q9UEF7	Recommended Dilutions: WB 1:2000-1:10000
Isotype: IgG1	Full Name: klotho	
Immunogen Catalog Number: AG27838	Calculated MW: 116 kDa	
	Observed MW: 125-135 kDa	

Applications

Tested Applications: WB, ELISA	Positive Controls: WB : mouse kidney tissue,
Cited Applications: IF	
Species Specificity: Human, Mouse, rat	
Cited Species: rat, mouse	

Notable Publications

Author	Pubmed ID	Journal	Application
Cheng Chen	35839976	Toxicol Lett	IF
Hao Chen	38558206	Apoptosis	IF

Storage

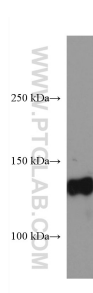
Storage:
Store at -20°C. Stable for one year after shipment.
Storage Buffer:
PBS with 0.02% sodium azide and 50% glycerol pH 7.3.
Aliquoting is unnecessary for -20°C storage

*** 20ul sizes contain 0.1% BSA

For technical support and original validation data for this product please contact:
T: 1 (888) 4PTGLAB (1-888-478-4522) (toll free in USA), or 1(312) 455-8498 (outside USA)
E: proteintech@ptglab.com
W: ptglab.com

This product is exclusively available under Proteintech Group brand and is not available to purchase from any other manufacturer.

Selected Validation Data



Mouse kidney tissue were subjected to SDS PAGE followed by western blot with 67331-1-Ig (KL antibody) at dilution of 1:5000 incubated at room temperature for 1.5 hours.