

For Research Use Only

# KL Monoclonal antibody

Catalog Number: 67331-1-Ig **1 Publications**



## Basic Information

<b>Catalog Number:</b> 67331-1-Ig	<b>GenBank Accession Number:</b> NM_004795	<b>Purification Method:</b> Protein G purification
<b>Size:</b> 150ul , Concentration: 2100 µg/ml by Nanodrop and 1000 µg/ml by Bradford method using BSA as the standard;	<b>GeneID (NCBI):</b> 9365	<b>CloneNo.:</b> 4D1G11
<b>Source:</b> Mouse	<b>Full Name:</b> klotho	<b>Recommended Dilutions:</b> WB 1:2000-1:10000
<b>Isotype:</b> IgG1	<b>Calculated MW:</b> 116 kDa	
<b>Immunogen Catalog Number:</b> AG27838	<b>Observed MW:</b> 125-135 kDa	

## Applications

<b>Tested Applications:</b> WB,ELISA	<b>Positive Controls:</b> WB : mouse kidney tissue,
<b>Cited Applications:</b> IF	
<b>Species Specificity:</b> Human, Mouse, rat	
<b>Cited Species:</b> rat	

## Background Information

### Notable Publications

Author	Pubmed ID	Journal	Application
Cheng Chen	35839976	Toxicol Lett	IF

## Storage

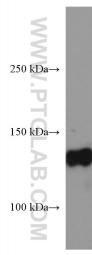
**Storage:**  
Store at -20°C.  
**Storage Buffer:**  
PBS with 0.02% sodium azide and 50% glycerol pH 7.3.  
Aliquoting is unnecessary for -20°C storage

**\*\*\* 20ul sizes contain 0.1% BSA**

For technical support and original validation data for this product please contact:  
T: 1 (888) 4PTGLAB (1-888-478-4522) (toll free in USA), or 1(312) 455-8498 (outside USA)  
E: proteintech@ptglab.com  
W: ptglab.com

This product is exclusively available under Proteintech Group brand and is not available to purchase from any other manufacturer.

## Selected Validation Data



Mouse kidney tissue were subjected to SDS PAGE followed by western blot with 67331-1-Ig (KL antibody) at dilution of 1:5000 incubated at room temperature for 1.5 hours.