

For Research Use Only

KL Monoclonal antibody, PBS Only

Catalog Number: 67331-1-PBS



Basic Information

Catalog Number:

67331-1-PBS

Size:

100ug , Concentration: 1 mg/ml by Nanodrop;

Source:

Mouse

Isotype:

IgG1

Immunogen Catalog Number:

AG27838

GenBank Accession Number:

NM_004795

GeneID (NCBI):

9365

UNIPROT ID:

Q9UEF7

Full Name:

klotho

Calculated MW:

116 kDa

Observed MW:

125-135 kDa

Purification Method:

Protein A purification

CloneNo.:

4D1G11

Applications

Tested Applications:

WB, ELISA

Species Specificity:

Human, Mouse, rat

Storage

Storage:

Store at -80°C.

Storage Buffer:

PBS only

For technical support and original validation data for this product please contact:

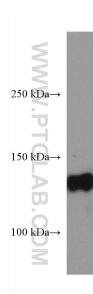
T: 1 (888) 4PTGLAB (1-888-478-4522) (toll free in USA), or 1(312) 455-8498 (outside USA)

E: proteintech@ptglab.com

W: ptglab.com

This product is exclusively available under Proteintech Group brand and is not available to purchase from any other manufacturer.

Selected Validation Data



Mouse kidney tissue were subjected to SDS PAGE followed by western blot with 67331-1-Ig (KL antibody) at dilution of 1:5000 incubated at room temperature for 1.5 hours. This data was developed using the same antibody clone with 67331-1-PBS in a different storage buffer formulation.