

For Research Use Only

MAP2K4 Monoclonal antibody

Catalog Number: 67333-1-Ig **2 Publications**



Basic Information

Catalog Number: 67333-1-Ig	GenBank Accession Number: BC036032	Purification Method: Protein A purification
Size: 150ul , Concentration: 1700 ug/ml by Nanodrop and 1000 ug/ml by Bradford method using BSA as the standard;	GeneID (NCBI): 6416	CloneNo.: 2E4C1
Source: Mouse	UNIPROT ID: P45985	Recommended Dilutions: WB 1:5000-1:50000 IHC 1:250-1:1000
Isotype: IgG2b	Full Name: mitogen-activated protein kinase kinase 4	
Immunogen Catalog Number: AG11348	Calculated MW: 399 aa, 44 kDa	
	Observed MW: 44-50 kDa	

Applications

Tested Applications: WB, IHC, ELISA	Positive Controls:
Cited Applications: WB	WB : HEK-293 cells, HepG2 cells, Jurkat cells, K-562 cells, HSC-T6 cells
Species Specificity: Human, rat	IHC : human breast cancer tissue,
Cited Species: human, mouse	
Note-IHC: suggested antigen retrieval with TE buffer pH 9.0; (*) Alternatively, antigen retrieval may be performed with citrate buffer pH 6.0	

Background Information

MEK4 is also named as JNKK1, MAP2K4, MKK4, PRKMK4, SEK1, SERK1, SIKK1 and belongs to the protein kinase superfamily. MEK4 is a member of the mitogen-activated protein kinase family, originally identified as a kinase involved in the stress-activated protein kinase pathway by directly phosphorylating c-Jun NH 2-terminal kinase. This protein has 2 isoforms produced by alternative splicing.

Notable Publications

Author	Pubmed ID	Journal	Application
Zehua Zuo	35899070	PNAS Nexus	WB
Zhong Xian	37062136	Phytomedicine	WB

Storage

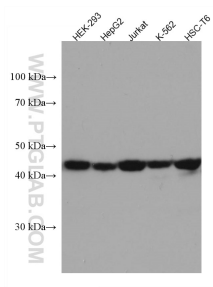
Storage:
Store at -20°C. Stable for one year after shipment.
Storage Buffer:
PBS with 0.02% sodium azide and 50% glycerol pH 7.3.
Aliquoting is unnecessary for -20°C storage

*** 20ul sizes contain 0.1% BSA

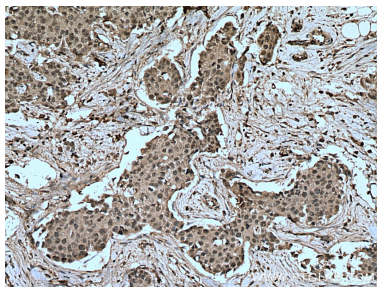
For technical support and original validation data for this product please contact:
T: 1 (888) 4PTGLAB (1-888-478-4522) (toll free in USA), or 1(312) 455-8498 (outside USA)
E: proteintech@ptglab.com
W: ptglab.com

This product is exclusively available under Proteintech Group brand and is not available to purchase from any other manufacturer.

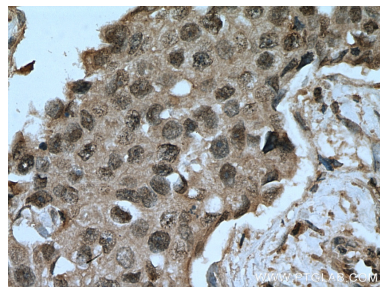
Selected Validation Data



Various lysates were subjected to SDS PAGE followed by western blot with 67333-1-Ig (MAP2K4 antibody) at dilution of 1:20000 incubated at room temperature for 1.5 hours.



Immunohistochemical analysis of paraffin-embedded human breast cancer tissue slide using 67333-1-Ig (MAP2K4 antibody) at dilution of 1:500 (under 10x lens). Heat mediated antigen retrieval with Tris-EDTA buffer (pH 9.0).



Immunohistochemical analysis of paraffin-embedded human breast cancer tissue slide using 67333-1-Ig (MAP2K4 antibody) at dilution of 1:500 (under 40x lens). Heat mediated antigen retrieval with Tris-EDTA buffer (pH 9.0).