

For Research Use Only

RCC1 Monoclonal antibody

Catalog Number: 67335-1-Ig



Basic Information

Catalog Number: 67335-1-Ig	GenBank Accession Number: BC010067	Purification Method: Protein G purification
Size: 150ul , Concentration: 2200 µg/ml by Nanodrop and 1000 µg/ml by Bradford method using BSA as the standard;	GeneID (NCBI): 1104	CloneNo.: 2C2F5
Source: Mouse	Full Name: regulator of chromosome condensation 1	Recommended Dilutions: WB 1:5000-1:50000 IHC 1:1000-1:4000
Isotype: IgG1	Calculated MW: 421 aa, 45 kDa	
Immunogen Catalog Number: AG17809	Observed MW: 45-50 kDa	

Applications

Tested Applications:

IHC, WB, ELISA

Species Specificity:

Human, mouse

**Note-IHC: suggested antigen retrieval with
TE buffer pH 9.0; (*) Alternatively, antigen
retrieval may be performed with citrate
buffer pH 6.0**

Positive Controls:

WB : HeLa cells, LNCaP cells, HepG2 cells, Jurkat cells,
K-562 cells

IHC : mouse brain tissue, human stomach cancer tissue

Background Information

CHC1, also named as RCC1, promotes the exchange of ran-bound gdp by gtp. It is involved in the regulation of onset of chromosome condensation in the S-phase. Phosphorylation of RCC1 on serines located in or near its nuclear localization signal activates RCC1 to generate RanGTP on mitotic chromosomes, which is required for spindle assembly and chromosome segregation.

Storage

Storage:

Store at -20°C. Stable for one year after shipment.

Storage Buffer:

PBS with 0.02% sodium azide and 50% glycerol pH 7.3.

Aliquoting is unnecessary for -20°C storage

*** 20ul sizes contain 0.1% BSA

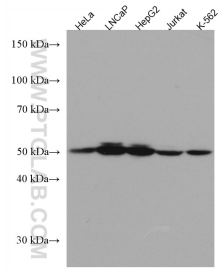
For technical support and original validation data for this product please contact:

T: 1 (888) 4PTGLAB (1-888-478-4522) (toll free
in USA), or 1(312) 455-8498 (outside USA)

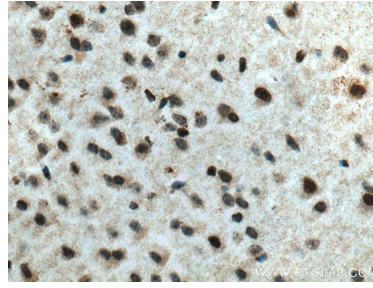
E: proteintech@ptglab.com
W: ptglab.com

This product is exclusively available under Proteintech Group brand and is not available to purchase from any other manufacturer.

Selected Validation Data



Various lysates were subjected to SDS PAGE followed by western blot with 67335-1-Ig (RCC1 antibody) at dilution of 1:20000 incubated at room temperature for 1.5 hours.



Immunohistochemical analysis of paraffin-embedded mouse brain tissue slide using 67335-1-Ig (RCC1 antibody) at dilution of 1:2000 (under 40x lens). Heat mediated antigen retrieval with Tris-EDTA buffer (pH 9.0).