

For Research Use Only

# SYNPO Monoclonal antibody

Catalog Number: 67339-1-Ig **2 Publications**



## Basic Information

<b>Catalog Number:</b> 67339-1-Ig	<b>GenBank Accession Number:</b> BC146665	<b>Purification Method:</b> Protein G purification
<b>Size:</b> 150ul , Concentration: 1800 ug/ml by Nanodrop and 1000 ug/ml by Bradford method using BSA as the standard;	<b>GeneID (NCBI):</b> 11346	<b>CloneNo.:</b> 1E1B1
<b>Source:</b> Mouse	<b>UNIPROT ID:</b> Q8N3V7	<b>Recommended Dilutions:</b> WB 1:2000-1:10000 IHC 1:750-1:3000 IF-P 1:200-1:800 IF/ICC 1:200-1:800
<b>Isotype:</b> IgG1	<b>Full Name:</b> synaptopodin	
<b>Immunogen Catalog Number:</b> AG15089	<b>Calculated MW:</b> 929 aa, 99 kDa	
	<b>Observed MW:</b> 100-110 kDa	

## Applications

<b>Tested Applications:</b> WB, IHC, IF/ICC, IF-P, ELISA	<b>Positive Controls:</b> <b>WB :</b> rat brain tissue, pig brain tissue, mouse brain tissue <b>IHC :</b> rat brain tissue, human kidney tissue <b>IF-P :</b> mouse brain tissue, mouse kidney tissue <b>IF/ICC :</b> HEK-293 cells,
<b>Cited Applications:</b> WB	
<b>Species Specificity:</b> human, mouse, rat, pig	
<b>Cited Species:</b> mouse	
<b>Note-IHC: suggested antigen retrieval with TE buffer pH 9.0; (*) Alternatively, antigen retrieval may be performed with citrate buffer pH 6.0</b>	

## Background Information

Synaptopodin is a actin-associated protein expressed in mature dendritic spines and renal podocytes. Several isoforms of synaptopodin have been reported: the 100 kDa neural form and 110 kDa renal form. 44-45 kDa may represent the degradation product of synaptopodin. As a podocyte specific protein, synaptopodin expression level was decreased in kidney but increased in the urinary podocytes from patients with preeclampsia, indicating that synaptopodin is a useful marker for preeclampsia. (15841212, 10555072)

## Notable Publications

Author	Pubmed ID	Journal	Application
Shan Song	35908070	Cell Death Dis	WB
Chunkai Huang	35478960	Front Cell Dev Biol	WB

## Storage

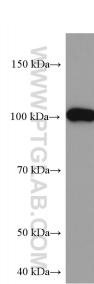
**Storage:**  
Store at -20°C. Stable for one year after shipment.  
**Storage Buffer:**  
PBS with 0.02% sodium azide and 50% glycerol, pH7.3  
Aliquoting is unnecessary for -20°C storage

\*\*\* 20ul sizes contain 0.1% BSA

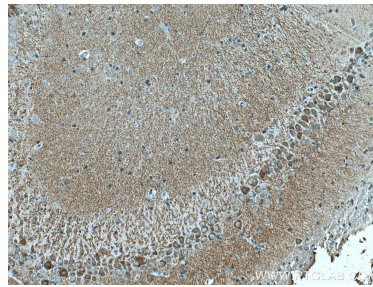
For technical support and original validation data for this product please contact:  
T: 1 (888) 4PTGLAB (1-888-478-4522) (toll free in USA), or 1(312) 455-8498 (outside USA)  
E: proteintech@ptglab.com  
W: ptglab.com

This product is exclusively available under Proteintech Group brand and is not available to purchase from any other manufacturer.

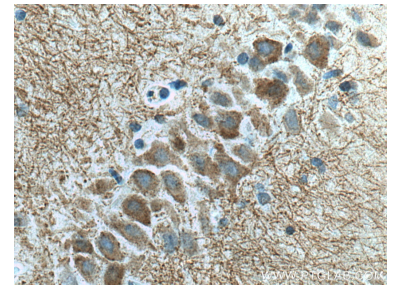
## Selected Validation Data



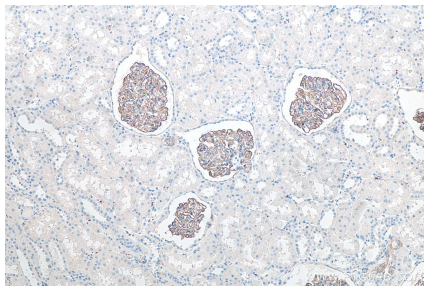
rat brain tissue were subjected to SDS PAGE followed by western blot with 67339-1-Ig (SYNPO antibody) at dilution of 1:5000 incubated at room temperature for 1.5 hours.



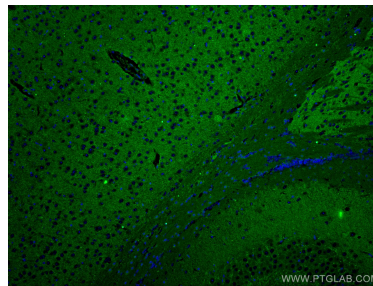
Immunohistochemical analysis of paraffin-embedded rat brain tissue slide using 67339-1-Ig (SYNPO antibody) at dilution of 1:1500 (under 10x lens). Heat mediated antigen retrieval with Tris-EDTA buffer (pH 9.0).



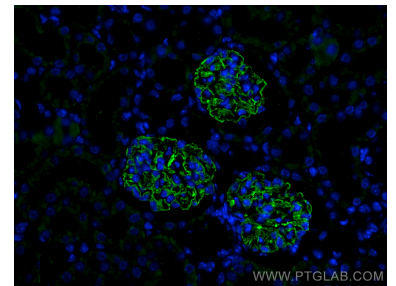
Immunohistochemical analysis of paraffin-embedded rat brain tissue slide using 67339-1-Ig (SYNPO antibody) at dilution of 1:1500 (under 40x lens). Heat mediated antigen retrieval with Tris-EDTA buffer (pH 9.0).



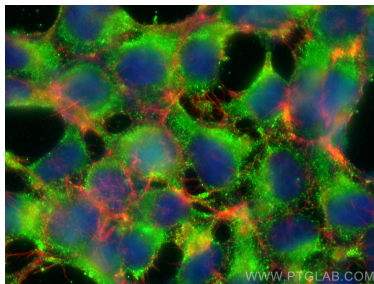
Immunohistochemical analysis of paraffin-embedded human kidney tissue slide using 67339-1-Ig (SYNPO antibody) at dilution of 1:8000 (under 10x lens). Heat mediated antigen retrieval with Tris-EDTA buffer (pH 9.0).



Immunofluorescent analysis of (4% PFA) fixed mouse brain tissue using SYNPO antibody (67339-1-Ig, Clone: 1E1B1) at dilution of 1:400 and CoraLite®488-Conjugated AffiniPure Goat Anti-Mouse IgG(H+L).



Immunofluorescent analysis of (4% PFA) fixed paraffin-embedded mouse kidney tissue using SYNPO antibody (67339-1-Ig, Clone: 1E1B1) at dilution of 1:400 and CoraLite®488-Conjugated Goat Anti-Mouse IgG(H+L) (SA00013-1). Heat mediated antigen retrieval with Tris-EDTA buffer (pH 9.0).



Immunofluorescent analysis of (-20°C Ethanol) fixed HEK-293 cells using SYNPO antibody (67339-1-Ig, Clone: 1E1B1) at dilution of 1:400 and CoraLite®488-Conjugated AffiniPure Goat Anti-Mouse IgG(H+L), CL594-phalloidin (red).