

For Research Use Only

# ATG7 Monoclonal antibody, PBS Only

Catalog Number: 67341-1-PBS

Featured Product



## Basic Information

Catalog Number:

67341-1-PBS

Size:

100ug, Concentration: 1mg/ml by Nanodrop;

Source:

Mouse

Isotype:

IgG2a

Immunogen Catalog Number:

AG29172

GenBank Accession Number:

BC000091

GeneID (NCBI):

10533

UNIPROT ID:

O95352

Full Name:

ATG7 autophagy related 7 homolog (S. cerevisiae)

Calculated MW:

78 kDa

Observed MW:

68-78 kDa

Purification Method:

Protein A purification

CloneNo.:

2B5A10

## Applications

Tested Applications:

WB, IHC, IF/ICC, FC (Intra), Indirect ELISA

Species Specificity:

human, mouse, rat, pig

## Background Information

Atg7 is an E1-like enzyme that is specifically involved in autophagosome formation and is essential for autophagy. As an autophagic-related protein it is required for linking to Atg12, Atg5 and Atg8, which are essential for Atg conjugation and autophagosome formation. Atg7 has been reported as an important regulator of autophagy with starvation-induced or chemotherapeutic agent treatment. The high expression level of ATG7 is related to the survival of patients with breast cancer. There are several isoforms of ATG7 protein ranged from 68 kDa to 78 kDa.

## Storage

Storage:

Store at -80°C.

Storage Buffer:

PBS Only

For technical support and original validation data for this product please contact:

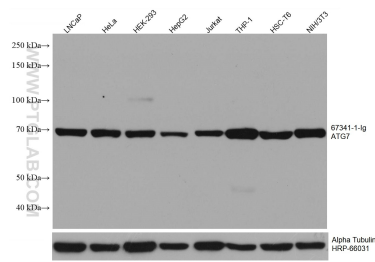
T: 1 (888) 4PTGLAB (1-888-478-4522) (toll free in USA), or 1(312) 455-8498 (outside USA)

E: [proteintech@ptglab.com](mailto:proteintech@ptglab.com)

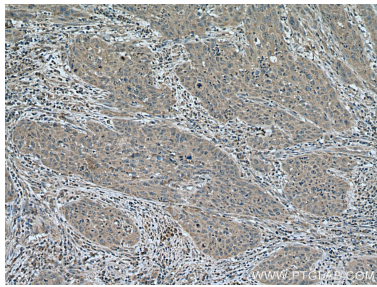
W: [ptglab.com](http://ptglab.com)

This product is exclusively available under Proteintech Group brand and is not available to purchase from any other manufacturer.

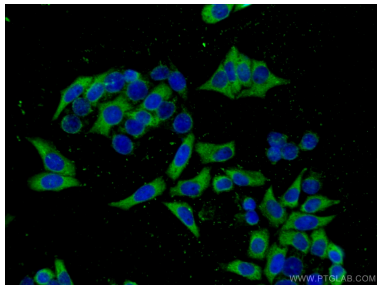
Selected Validation Data



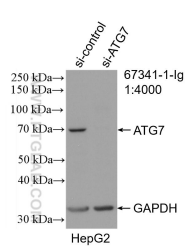
LNCaP cells were subjected to SDS PAGE followed by western blot with 67341-1-Ig (ATG7 antibody) at dilution of 1:10000 incubated at room temperature for 1.5 hours. The membrane was stripped and reblotted with HRP-conjugated Alpha Tubulin Monoclonal antibody (HRP-66031) as loading control. This data was developed using the same antibody clone with 67341-1-PBS in a different storage buffer formulation.



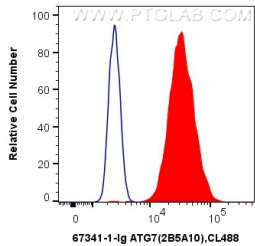
Immunohistochemical analysis of paraffin-embedded human cervical cancer tissue slide using 67341-1-Ig (ATG7 antibody) at dilution of 1:1000 (under 10x lens). Heat mediated antigen retrieval with Tris-EDTA buffer (pH 9.0). This data was developed using the same antibody clone with 67341-1-PBS in a different storage buffer formulation.



Immunofluorescent analysis of (-20°C Ethanol) fixed HeLa cells using 67341-1-Ig (ATG7 antibody) at dilution of 1:100 and CoraLite488-Conjugated AffiniPure Goat Anti-Mouse IgG(H+L). This data was developed using the same antibody clone with 67341-1-PBS in a different storage buffer formulation.



WB result of ATG7 antibody (67341-1-Ig; 1:4000; incubated at room temperature for 1.5 hours) with sh-Control and sh-ATG7 transfected HepG2 cells. This data was developed using the same antibody clone with 67341-1-PBS in a different storage buffer formulation.



1X10<sup>6</sup> HeLa cells were intracellularly stained with 0.5 ug Anti-Human ATG7 (67341-1-Ig, Clone:2B5A10) and CoraLite®488-Conjugated AffiniPure Goat Anti-Mouse IgG(H+L) at dilution 1:1000 (red), or 0.5 ug Mouse IgG2a Isotype Control (66360-2-Ig, Clone: K11A1B2A2) (blue). Cells were fixed with 4% PFA and permeabilized with Flow Cytometry Perm Buffer (PF00011-C). This data was developed using the same antibody clone with 67341-1-PBS in a

