

For Research Use Only

FUT3 Monoclonal antibody

Catalog Number: 67344-1-Ig



Basic Information

Catalog Number: 67344-1-Ig	GenBank Accession Number: BC108675	Purification Method: Protein G purification
Size: 150ul , Concentration: 2100 µg/ml by Nanodrop and 1000 µg/ml by Bradford method using BSA as the standard;	GeneID (NCBI): 2525	CloneNo.: 2A6G7
Source: Mouse	Full Name: fucosyltransferase 3 (galactoside 3(4)-L-fucosyltransferase, Lewis blood group)	Recommended Dilutions: WB 1:2000-1:10000 IHC 1:250-1:1000 IF 1:200-1:800
Isotype: IgG1	Calculated MW: 361 aa, 42 kDa	
Immunogen Catalog Number: AG12581	Observed MW: 42-45 kDa	

Applications

Tested Applications:

IF, IHC, WB, ELISA

Species Specificity:

Human

Note-IHC: suggested antigen retrieval with TE buffer pH 9.0; (*) Alternatively, antigen retrieval may be performed with citrate buffer pH 6.0

Positive Controls:

WB : human placenta tissue, NCCIT cells, JAR cells, HepG2 cells

IHC : human prostate hyperplasia tissue,

IF : human prostate hyperplasia tissue,

Background Information

Storage

Storage:

Store at -20°C. Stable for one year after shipment.

Storage Buffer:

PBS with 0.02% sodium azide and 50% glycerol pH 7.3.

Aliquoting is unnecessary for -20°C storage

*** 20ul sizes contain 0.1% BSA

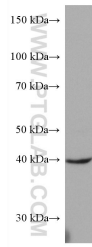
For technical support and original validation data for this product please contact:

T: 1 (888) 4PTGLAB (1-888-478-4522) (toll free in USA), or 1(312) 455-8498 (outside USA)

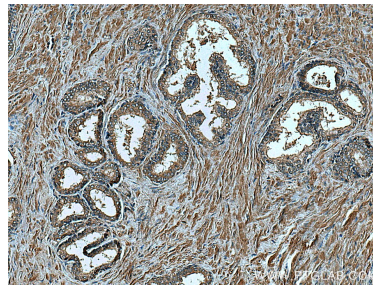
E: proteintech@ptglab.com
W: ptglab.com

This product is exclusively available under Proteintech Group brand and is not available to purchase from any other manufacturer.

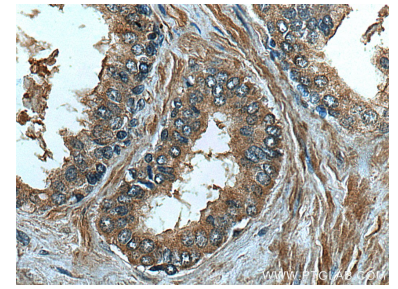
Selected Validation Data



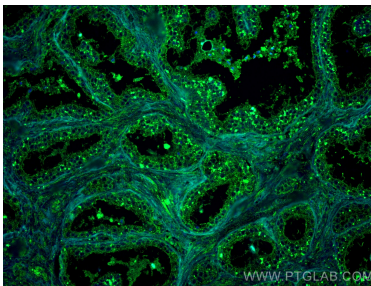
human placenta tissue were subjected to SDS PAGE followed by western blot with 67344-1-Ig (FUT3 antibody) at dilution of 1:5000 incubated at room temperature for 1.5 hours.



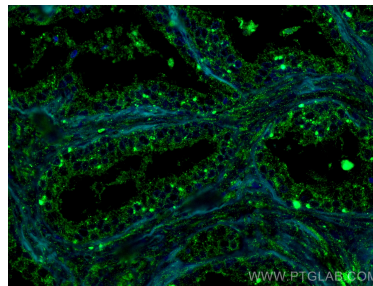
Immunohistochemical analysis of paraffin-embedded human prostate hyperplasia tissue slide using 67344-1-Ig (FUT3 antibody) at dilution of 1:500 (under 10x lens)..



Immunohistochemical analysis of paraffin-embedded human prostate hyperplasia tissue slide using 67344-1-Ig (FUT3 antibody) at dilution of 1:500 (under 40x lens)..



Immunofluorescent analysis of (4% PFA) fixed human prostate hyperplasia tissue using FUT3 antibody (67344-1-Ig, Clone: 2A6G7) at dilution of 1:400 and CoraLite@488-Conjugated AffiniPure Goat Anti-Mouse IgG(H+L).



Immunofluorescent analysis of (4% PFA) fixed human prostate hyperplasia tissue using FUT3 antibody (67344-1-Ig, Clone: 2A6G7) at dilution of 1:400 and CoraLite@488-Conjugated AffiniPure Goat Anti-Mouse IgG(H+L).