

For Research Use Only

ALDH5A1 Monoclonal antibody

Catalog Number: 67347-1-Ig **Featured Product**



Basic Information

Catalog Number: 67347-1-Ig	GenBank Accession Number: BC034321	Purification Method: Protein G purification
Size: 150ul , Concentration: 1300 µg/ml by Nanodrop and 1000 µg/ml by Bradford method using BSA as the standard;	GeneID (NCBI): 7915	CloneNo.: 1B9H10
Source: Mouse	Full Name: aldehyde dehydrogenase 5 family, member A1	Recommended Dilutions: WB 1:5000-1:50000 IHC 1:500-1:2000 IF 1:200-1:800
Isotype: IgG1	Calculated MW: 535 aa, 57 kDa	
Immunogen Catalog Number: AG11155	Observed MW: 51 kDa	

Applications

Tested Applications:
FC, IF, IHC, WB, ELISA

Species Specificity:
Human, Rat, Mouse, Pig

**Note-IHC: suggested antigen retrieval with
TE buffer pH 9.0; (*) Alternatively, antigen
retrieval may be performed with citrate
buffer pH 6.0**

Positive Controls:

WB : L02 cells, HepG2 cells, pig brain tissue

IHC : human liver cancer tissue,

IF : human liver cancer tissue,

Background Information

Storage

Storage:
Store at -20°C. Stable for one year after shipment.
Storage Buffer:
PBS with 0.02% sodium azide and 50% glycerol pH 7.3.
Aliquoting is unnecessary for -20°C storage

*** 20ul sizes contain 0.1% BSA

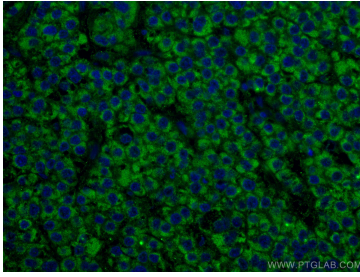
For technical support and original validation data for this product please contact:

T: 1 (888) 4PTGLAB (1-888-478-4522) (toll free
in USA), or 1(312) 455-8498 (outside USA)

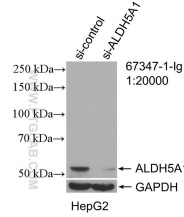
E: proteintech@ptglab.com
W: ptglab.com

This product is exclusively available under Proteintech Group brand and is not available to purchase from any other manufacturer.

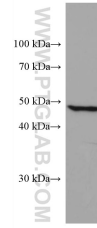
Selected Validation Data



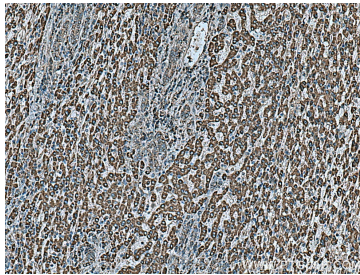
Immunofluorescent analysis of (4% PFA) fixed human liver cancer tissue using ALDH5A1 antibody (67347-1-Ig, Clone: 1B9H10) at dilution of 1:400 and CoraLite®488-Conjugated AffiniPure Goat Anti-Mouse IgG(H+L), DAPI (blue).



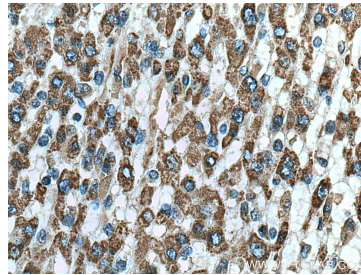
WB result of ALDH5A1 antibody (67347-1-Ig; 1:20000; incubated at room temperature for 1.5 hours) with sh-Control and sh-ALDH5A1 transfected HepG2 cells.



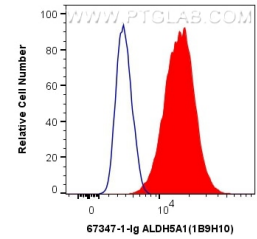
L02 cells were subjected to SDS PAGE followed by western blot with 67347-1-Ig (ALDH5A1 antibody) at dilution of 1:50000 incubated at room temperature for 1.5 hours.



Immunohistochemical analysis of paraffin-embedded human liver cancer tissue slide using 67347-1-Ig (ALDH5A1 antibody) at dilution of 1:1000 (under 10x lens). Heat mediated antigen retrieval with Tris-EDTA buffer (pH 9.0).



Immunohistochemical analysis of paraffin-embedded human liver cancer tissue slide using 67347-1-Ig (ALDH5A1 antibody) at dilution of 1:1000 (under 40x lens). Heat mediated antigen retrieval with Tris-EDTA buffer (pH 9.0).



1×10^6 A431 cells were intracellularly stained with 0.4 ug Anti-Human ALDH5A1 (67347-1-Ig, Clone:1B9H10) and CoraLite®488-Conjugated AffiniPure Goat Anti-Mouse IgG(H+L) at dilution 1:1000 (red), or 0.4 ug Mouse IgG1 Isotype Control (MOPC-21) (65124-1-Ig, Clone: MOPC-21) (blue). Cells were fixed with 4% PFA and permeabilized with Flow Cytometry Perm Buffer (PF00011-C).