

For Research Use Only

# ALDH5A1 Monoclonal antibody, PBS Only

Catalog Number: 67347-1-PBS

Featured Product



## Basic Information

Catalog Number:

67347-1-PBS

Size:

100ug, Concentration: 1mg/ml by Nanodrop;

Source:

Mouse

Isotype:

IgG1

Immunogen Catalog Number:

AG11155

GenBank Accession Number:

BC034321

GeneID (NCBI):

7915

UNIPROT ID:

P51649

Full Name:

aldehyde dehydrogenase 5 family, member A1

Calculated MW:

535 aa, 57 kDa

Observed MW:

51 kDa

Purification Method:

Protein G purification

CloneNo.:

1B9H10

## Applications

Tested Applications:

WB, IHC, IF-P, FC (Intra), Indirect ELISA

Species Specificity:

human, mouse, rat, pig

## Storage

Storage:

Store at -80°C.

Storage Buffer:

PBS Only

For technical support and original validation data for this product please contact:

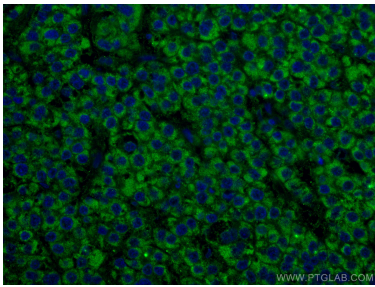
T: 1 (888) 4PTGLAB (1-888-478-4522) (toll free in USA), or 1(312) 455-8498 (outside USA)

E: [proteintech@ptglab.com](mailto:proteintech@ptglab.com)

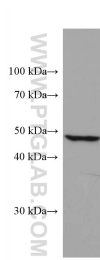
W: [ptglab.com](http://ptglab.com)

This product is exclusively available under Proteintech Group brand and is not available to purchase from any other manufacturer.

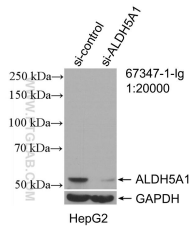
Selected Validation Data



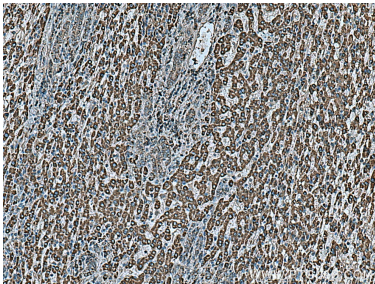
Immunofluorescent analysis of (4% PFA) fixed human liver cancer tissue using ALDH5A1 antibody (67347-1-Ig, Clone: 1B9H10 ) at dilution of 1:400 and CoraLite®488-Conjugated AffiniPure Goat Anti-Mouse IgG(H+L). DAPI (blue). This data was developed using the same antibody clone with 67347-1-PBS in a different storage buffer formulation.



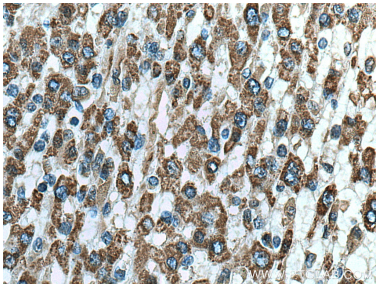
L02 cells were subjected to SDS PAGE followed by western blot with 67347-1-Ig (ALDH5A1 antibody) at dilution of 1:50000 incubated at room temperature for 1.5 hours. This data was developed using the same antibody clone with 67347-1-PBS in a different storage buffer formulation.



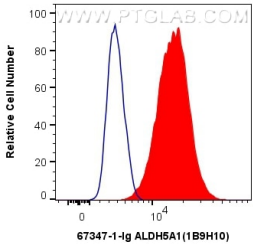
WB result of ALDH5A1 antibody (67347-1-Ig; 1:20000; incubated at room temperature for 1.5 hours) with sh-Control and sh-ALDH5A1 transfected HepG2 cells. This data was developed using the same antibody clone with 67347-1-PBS in a different storage buffer formulation.



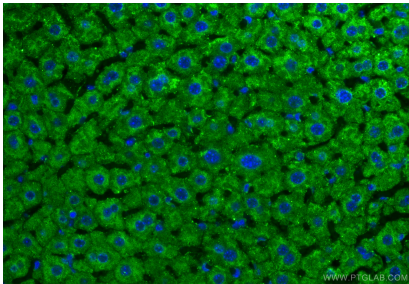
Immunohistochemical analysis of paraffin-embedded human liver cancer tissue slide using 67347-1-Ig (ALDH5A1 antibody) at dilution of 1:1000 (under 10x lens). Heat mediated antigen retrieval with Tris-EDTA buffer (pH 9.0). This data was developed using the same antibody clone with 67347-1-PBS in a different storage buffer formulation.



Immunohistochemical analysis of paraffin-embedded human liver cancer tissue slide using 67347-1-Ig (ALDH5A1 antibody) at dilution of 1:1000 (under 40x lens). Heat mediated antigen retrieval with Tris-EDTA buffer (pH 9.0). This data was developed using the same antibody clone with 67347-1-PBS in a different storage buffer formulation.



1X10<sup>6</sup> A431 cells were intracellularly stained with 0.4 ug Anti-Human ALDH5A1 (67347-1-Ig, Clone:1B9H10) and CoraLite®488-Conjugated AffiniPure Goat Anti-Mouse IgG(H+L) at dilution 1:1000 (red), or 0.4 ug Mouse IgG1 Isotype Control (MOPC-21) (65124-1-Ig, Clone: MOPC-21) (blue). Cells were fixed with 4% PFA and permeabilized with Flow Cytometry Perm Buffer (PF00011-C). This data was developed using the same antibody clone with 67347-1-PBS in a



Immunofluorescent analysis of (4% PFA) fixed paraffin-embedded mouse liver tissue using ALDH5A1 antibody (67347-1-Ig, Clone: 1B9H10 ) at dilution of 1:400 and CoraLite®488-Conjugated Goat Anti-Mouse IgG(H+L) (SA00013-1). Heat mediated antigen retrieval with Tris-EDTA buffer (pH 9.0). This data was developed using the same antibody clone with 67347-1-PBS in a different storage buffer formulation.