

For Research Use Only

# ANAPC5 Monoclonal antibody

Catalog Number: 67348-1-Ig



## Basic Information

<b>Catalog Number:</b> 67348-1-Ig	<b>GenBank Accession Number:</b> BC001081	<b>Purification Method:</b> Protein G purification
<b>Size:</b> 150ul, Concentration: 1200 µg/ml by Nanodrop and 500 µg/ml by Bradford method using BSA as the standard;	<b>GeneID (NCBI):</b> 51433	<b>CloneNo.:</b> 2A7G5
<b>Source:</b> Mouse	<b>Full Name:</b> anaphase promoting complex subunit 5	<b>Recommended Dilutions:</b> WB 1:5000-1:50000 IHC 1:250-1:1000 IF 1:200-1:800
<b>Isotype:</b> IgG1	<b>Calculated MW:</b> 85 kDa	
<b>Immunogen Catalog Number:</b> AG7409	<b>Observed MW:</b> 85 kDa, 72 kDa	

## Applications

### Tested Applications:

IF, IHC, WB, ELISA

### Species Specificity:

Human, Mouse, Rat

**Note-IHC: suggested antigen retrieval with TE buffer pH 9.0; (\*) Alternatively, antigen retrieval may be performed with citrate buffer pH 6.0**

### Positive Controls:

**WB:** HEK-293 cells, HepG2 cells, Jurkat cells, HSC-T6 cells, NIH/3T3 cells, 4T1 cells

**IHC:** human breast cancer tissue,

**IF:** human breast cancer tissue,

## Background Information

### Storage

#### Storage:

Store at -20°C.

#### Storage Buffer:

PBS with 0.02% sodium azide and 50% glycerol pH 7.3.

Aliquoting is unnecessary for -20°C storage

\*\*\* 20ul sizes contain 0.1% BSA

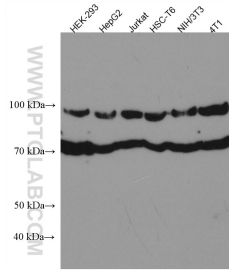
For technical support and original validation data for this product please contact:

T: 1 (888) 4PTGLAB (1-888-478-4522) (toll free in USA), or 1(312) 455-8498 (outside USA)

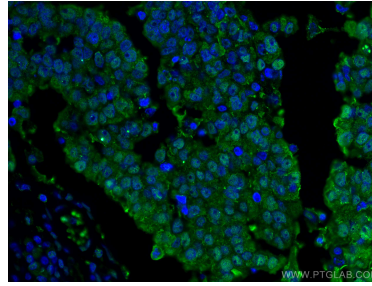
E: [proteintech@ptglab.com](mailto:proteintech@ptglab.com)  
W: [ptglab.com](http://ptglab.com)

This product is exclusively available under Proteintech Group brand and is not available to purchase from any other manufacturer.

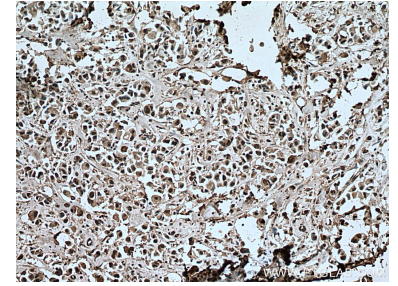
## Selected Validation Data



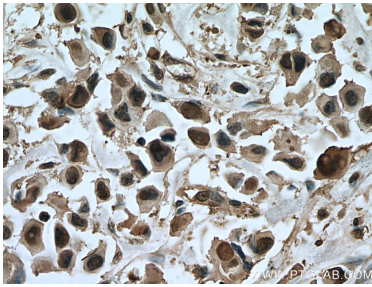
Various lysates were subjected to SDS PAGE followed by western blot with 67348-1-Ig (ANAPC5 antibody) at dilution of 1:10000 incubated at room temperature for 1.5 hours.



Immunofluorescent analysis of (4% PFA) fixed human breast cancer tissue using ANAPC5 antibody (67348-1-Ig, Clone: 2A7G5) at dilution of 1:400 and CoraLite®488-Conjugated AffiniPure Goat Anti-Mouse IgG(H+L).



Immunohistochemical analysis of paraffin-embedded human breast cancer tissue slide using 67348-1-Ig (ANAPC5 antibody) at dilution of 1:500 (under 10x lens). Heat mediated antigen retrieval with Tris-EDTA buffer (pH 9.0).



Immunohistochemical analysis of paraffin-embedded human breast cancer tissue slide using 67348-1-Ig (ANAPC5 antibody) at dilution of 1:500 (under 40x lens). Heat mediated antigen retrieval with Tris-EDTA buffer (pH 9.0).