

For Research Use Only

# SRY Monoclonal antibody

Catalog Number: 67349-1-Ig **1 Publications**



## Basic Information

<b>Catalog Number:</b> 67349-1-Ig	<b>GenBank Accession Number:</b> BC074924	<b>Purification Method:</b> Protein A purification
<b>Size:</b> 150ul , Concentration: 1600 µg/ml by Nanodrop and 1000 µg/ml by Bradford method using BSA as the standard;	<b>GeneID (NCBI):</b> 6736	<b>CloneNo.:</b> 2E9A4
<b>Source:</b> Mouse	<b>Full Name:</b> sex determining region Y	<b>Recommended Dilutions:</b> WB 1:1000-1:4000
<b>Isotype:</b> IgG1	<b>Calculated MW:</b> 204 aa, 24 kDa	
<b>Immunogen Catalog Number:</b> AG12610	<b>Observed MW:</b> 25-30 kDa	

## Applications

<b>Tested Applications:</b> WB, ELISA	<b>Positive Controls:</b> WB : LNCaP cells, DU 145 cells, HeLa cells
<b>Cited Applications:</b> WB	
<b>Species Specificity:</b> Human, rat	
<b>Cited Species:</b> human	

## Background Information

SRY (sex-determining region Y protein) is a trans-criptional activator required for male sex determination in mammals. This protein, also referred to as testis-determining factor (TDF), is an HMG box protein that initiates the formation of testis from undifferentiated gonad. The DNA-binding activity of SRY is required for normal testis formation. This DNA-binding activity is thought to be regulated by PKA, which phosphorylates SRY in vivo. Mutations in SRY have been associated with 46,XY gonadal dysgenesis, in which the gonads fail to develop in XY phenotypic females.

## Notable Publications

Author	Pubmed ID	Journal	Application
James W Clancy	35235806	Cell Rep	WB

## Storage

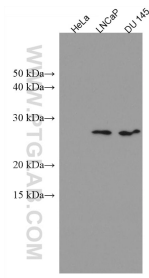
**Storage:**  
Store at -20°C. Stable for one year after shipment.  
**Storage Buffer:**  
PBS with 0.02% sodium azide and 50% glycerol pH 7.3.  
Aliquoting is unnecessary for -20°C storage

\*\*\* 20ul sizes contain 0.1% BSA

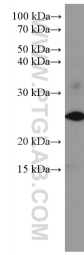
For technical support and original validation data for this product please contact:  
T: 1 (888) 4PTGLAB (1-888-478-4522) (toll free in USA), or 1(312) 455-8498 (outside USA)  
E: proteintech@ptglab.com  
W: ptglab.com

This product is exclusively available under Proteintech Group brand and is not available to purchase from any other manufacturer.

## Selected Validation Data



Various lysates were subjected to SDS PAGE followed by western blot with 67349-1-Ig (SRY antibody) at dilution of 1:1000 incubated at room temperature for 1.5 hours. SRY negative cell line HeLa cell line was served as negative control.



LNCaP cells were subjected to SDS PAGE followed by western blot with 67349-1-Ig (SRY antibody) at dilution of 1:2000 incubated at room temperature for 1.5 hours.