

For Research Use Only

RALBP1 Monoclonal antibody

Catalog Number: 67359-1-Ig



Basic Information

Catalog Number: 67359-1-Ig	GenBank Accession Number: BC013126	Purification Method: Protein G purification
Size: 150ul , Concentration: 1900 µg/ml by Nanodrop and 1000 µg/ml by Bradford method using BSA as the standard;	GeneID (NCBI): 10928	CloneNo.: 1B2F5
Source: Mouse	Full Name: ralA binding protein 1	Recommended Dilutions: WB 1:1000-1:6000
Isotype: IgG1	Calculated MW: 655 aa, 76 kDa	
Immunogen Catalog Number: AG28618	Observed MW: 95 kDa	

Applications

Tested Applications: FC, WB, ELISA	Positive Controls:
Species Specificity: Human, mouse	WB : NIH/3T3 cells, Jurkat cells, HEK-293 cells, LNCaP cells, MCF-7 cells

Background Information

Storage

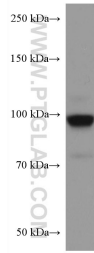
Storage:
Store at -20°C.
Storage Buffer:
PBS with 0.02% sodium azide and 50% glycerol pH 7.3.
Aliquoting is unnecessary for -20°C storage

*** 20ul sizes contain 0.1% BSA

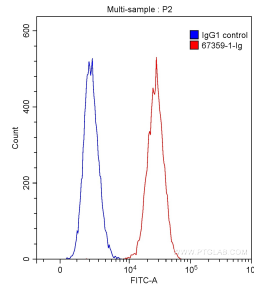
For technical support and original validation data for this product please contact:
T: 1 (888) 4PTGLAB (1-888-478-4522) (toll free in USA), or 1(312) 455-8498 (outside USA)
E: proteintech@ptglab.com
W: ptglab.com

This product is exclusively available under Proteintech Group brand and is not available to purchase from any other manufacturer.

Selected Validation Data



NIH/3T3 cells were subjected to SDS PAGE followed by western blot with 67359-1-Ig (RALBP1 antibody) at dilution of 1:3000 incubated at room temperature for 1.5 hours.



1X10⁶ HEK-293 cells were stained with 0.20 ug/test Anti-Human RALBP1 (67359-1-Ig, Clone:1B2F5) (red) or 0.20 ug control antibody (blue) and CoraLite@488-Conjugated AffiniPure Goat Anti-Mouse IgG(H+L) with dilution 1:1000. Fixed with 90% MeOH.