

For Research Use Only

# UGDH Monoclonal antibody, PBS Only



Catalog Number: 67360-1-PBS

Featured Product

## Basic Information

Catalog Number:

67360-1-PBS

Size:

100ug, Concentration: 1 mg/ml by Nanodrop;

Source:

Mouse

Isotype:

IgG1

Immunogen Catalog Number:

AG29747

GenBank Accession Number:

BC022781

GeneID (NCBI):

7358

UNIPROT ID:

O60701

Full Name:

UDP-glucose dehydrogenase

Calculated MW:

494 aa, 55 kDa

Observed MW:

55-60 kDa

Purification Method:

Protein G purification

CloneNo.:

1E2E1

## Applications

Tested Applications:

WB, IF, IHC, Indirect ELISA

Species Specificity:

Human, Mouse, Rat, pig

## Background Information

UDP-glucose 6-dehydrogenase (UGDH) is a key enzyme in the uronic acid pathway, and converts UDP-glucose (UDP-Glc) to UDP-glucuronic acid (UDP-GlcA). UGDH is critical to the production of extracellular matrix components which are essential to the migration and connectivity of neurons early in human brain development. UDP-GlcA is an essential sugar nucleotide precursor and a key component in the synthesis and stepwise degradation of glycosaminoglycans (GAGs). The protein subunit migrates on SDS-PAGE at ~55 kDa. (PMID: 32175296, PMID: 21576248, PMID: 31243371).

## Storage

Storage:

Store at -80°C.

Storage Buffer:

PBS Only

For technical support and original validation data for this product please contact:

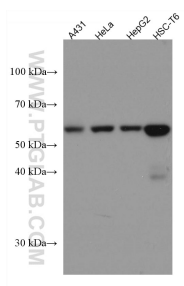
T: 1 (888) 4PTGLAB (1-888-478-4522) (toll free in USA), or 1(312) 455-8498 (outside USA)

E: [proteintech@ptglab.com](mailto:proteintech@ptglab.com)

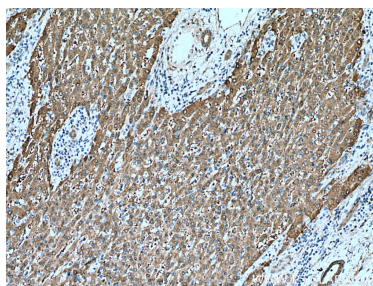
W: [ptglab.com](http://ptglab.com)

This product is exclusively available under Proteintech Group brand and is not available to purchase from any other manufacturer.

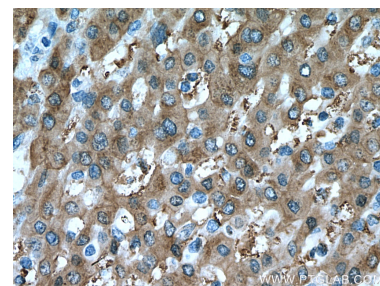
## Selected Validation Data



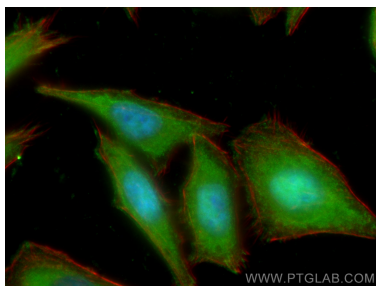
Various lysates were subjected to SDS PAGE followed by western blot with 67360-1-Ig (UGDH antibody) at dilution of 1:20000 incubated at room temperature for 1.5 hours. This data was developed using the same antibody clone with 67360-1-PBS in a different storage buffer formulation.



Immunohistochemical analysis of paraffin-embedded human liver cancer tissue slide using 67360-1-Ig (UGDH antibody) at dilution of 1:1000 (under 10x lens). Heat mediated antigen retrieval with Tris-EDTA buffer (pH 9.0). This data was developed using the same antibody clone with 67360-1-PBS in a different storage buffer formulation.



Immunohistochemical analysis of paraffin-embedded human liver cancer tissue slide using 67360-1-Ig (UGDH antibody) at dilution of 1:1000 (under 40x lens). Heat mediated antigen retrieval with Tris-EDTA buffer (pH 9.0). This data was developed using the same antibody clone with 67360-1-PBS in a different storage buffer formulation.



Immunofluorescent analysis of (-20°C Ethanol) fixed HepG2 cells using UGDH antibody (67360-1-Ig, Clone: 1E2E1) at dilution of 1:400 and CoraLite®488-Conjugated AffiniPure Goat Anti-Mouse IgG(H+L), CL594-Phalloidin (red). This data was developed using the same antibody clone with 67360-1-PBS in a different storage buffer formulation.