

For Research Use Only

NHE1 Monoclonal antibody

Catalog Number: 67363-1-Ig

Featured Product

1 Publications



Basic Information

Catalog Number: 67363-1-Ig	GenBank Accession Number: BC012121	Purification Method: Protein G purification
Size: 150ul, Concentration: 1000 µg/ml by Bradford method using BSA as the standard;	GeneID (NCBI): 6548	CloneNo.: 3D9F3
Source: Mouse	Full Name: solute carrier family 9 (sodium/hydrogen exchanger), member 1	Recommended Dilutions: WB 1:5000-1:50000 IHC 1:500-1:2000
Isotype: IgG1	Calculated MW: 815 aa, 91 kDa	
Immunogen Catalog Number: AG14329	Observed MW: 110 kDa	

Applications

Tested Applications:

IHC, WB, ELISA

Cited Applications:

WB

Species Specificity:

Human, Rat

Cited Species:

rat

Note-IHC: suggested antigen retrieval with TE buffer pH 9.0; (*) Alternatively, antigen retrieval may be performed with citrate buffer pH 6.0

Positive Controls:

WB : A549 cells, NCI-H1299 cells, HEK-293 cells, LNCaP cells, Jurkat cells, HSC-T6 cells, PC-12 cells

IHC : human liver tissue,

Background Information

NHE1, also named as SLC9A1, is involved in pH regulation that can eliminate acids generated by active metabolism and counter adverse environmental conditions. NHE1 plays an important role in signal transduction. It has been shown that NHE1 participates in the development and progression of human breast cancer, gastric cancer and others. NHE1 has some isoforms with 91 kDa, 110 kDa (phosphoglycoprotein) and 210 kDa (dimeric protein). (PMID:28098891, 27751915, 8300588)

Notable Publications

Author	Pubmed ID	Journal	Application
Ke Lin	35217813	Acta Pharmacol Sin	WB

Storage

Storage:

Store at -20°C. Stable for one year after shipment.

Storage Buffer:

PBS with 0.02% sodium azide and 50% glycerol pH 7.3.

Aliquoting is unnecessary for -20°C storage

*** 20ul sizes contain 0.1% BSA

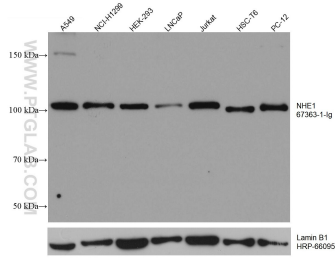
For technical support and original validation data for this product please contact:

T: 1 (888) 4PTGLAB (1-888-478-4522) (toll free in USA), or 1(312) 455-8498 (outside USA)

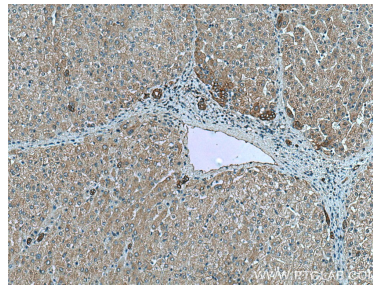
E: proteintech@ptglab.com
W: ptglab.com

This product is exclusively available under Proteintech Group brand and is not available to purchase from any other manufacturer.

Selected Validation Data



Various lysates were subjected to SDS PAGE followed by western blot with 67363-1-ig (NHE1 antibody) at dilution of 1:20000 incubated at room temperature for 1.5 hours.



Immunohistochemical analysis of paraffin-embedded human liver tissue slide using 67363-1-ig (NHE1 antibody) at dilution of 1:1000 (under 10x lens). Heat mediated antigen retrieval with Tris-EDTA buffer (pH 9.0).