

For Research Use Only

entacmaea quadricolor Red fluorescent protein Monoclonal antibody

Catalog Number: **67378-1-Ig** **5 Publications**

Basic Information

Catalog Number: 67378-1-Ig	GenBank Accession Number: GeneID (NCBI): UNIPROT ID: Q8ISF8	Purification Method: Protein A purification
Size: 150ul , Concentration: 2200 µg/ml by Nanodrop and 1000 µg/ml by Bradford method using BSA as the standard;	Full Name: Calculated MW: 26 kDa	CloneNo.: 1E3C5
Source: Mouse		Recommended Dilutions: WB 1:5000-1:100000
Isotype: IgG2b		
Immunogen Catalog Number: AG27669		

Applications

Tested Applications: WB, ELISA	Positive Controls: WB : ag27669,
Cited Applications: WB, IF	
Species Specificity: Recombinant Protein	
Cited Species: yeast, mouse	

Background Information

Fluorescent proteins have become a useful and ubiquitous tool for making chimeric proteins. Red fluorescent protein from *Entacmaea quadricolor*. Abs(max)=559 nm; Exhibits a smaller absorbance peak at 525 nm. It has a strong fluorescence emission spectrum which peaks at 611 nm. This antibody can be used to detect the RFP tagged (*Entacmaea quadricolor*) protein.

Notable Publications

Author	Pubmed ID	Journal	Application
Runmin Che	36449354	Autophagy	WB
Jens Tilsner	35987858	Mol Plant Pathol	WB
Fakun Cao	37602973	EMBO Rep	IF

Storage

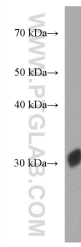
Storage:
Store at -20°C. Stable for one year after shipment.
Storage Buffer:
PBS with 0.02% sodium azide and 50% glycerol pH 7.3.
Aliquoting is unnecessary for -20°C storage

*** 20ul sizes contain 0.1% BSA

For technical support and original validation data for this product please contact:
T: 1 (888) 4PTGLAB (1-888-478-4522) (toll free in USA), or 1(312) 455-8498 (outside USA)
E: proteintech@ptglab.com
W: ptglab.com

This product is exclusively available under Proteintech Group brand and is not available to purchase from any other manufacturer.

Selected Validation Data



RFP tagged protein were subjected to SDS PAGE followed by western blot with 67378-1-Ig (RFP antibody) at dilution of 1:80000 incubated at room temperature for 1.5 hours.