

For Research Use Only

# SEC11A Monoclonal antibody

Catalog Number: 67379-1-Ig



## Basic Information

<b>Catalog Number:</b> 67379-1-Ig	<b>GenBank Accession Number:</b> BC000359	<b>Purification Method:</b> Protein A purification
<b>Size:</b> 150ul , Concentration: 2400 µg/ml by Nanodrop and 1000 µg/ml by Bradford method using BSA as the standard;	<b>GeneID (NCBI):</b> 23478	<b>CloneNo.:</b> 2B11G12
<b>Source:</b> Mouse	<b>Full Name:</b> SEC11 homolog A (S. cerevisiae)	<b>Recommended Dilutions:</b> WB 1:2000-1:10000 IHC 1:50-1:500
<b>Isotype:</b> IgG2b	<b>Calculated MW:</b> 21 kDa	
<b>Immunogen Catalog Number:</b> AG6610	<b>Observed MW:</b> 17-21 kDa	

## Applications

### Tested Applications:

IHC, WB, ELISA

### Species Specificity:

Human, Mouse, Rat

**Note-IHC: suggested antigen retrieval with  
TE buffer pH 9.0; (\*) Alternatively, antigen  
retrieval may be performed with citrate  
buffer pH 6.0**

### Positive Controls:

WB : HeLa cells, HSC-T6 cells, HepG2 cells, Jurkat cells,  
K-562 cells, NIH/3T3 cells, 4T1 cells

IHC : human liver cancer tissue,

## Background Information

SEC11A (Signal peptidase complex catalytic subunit SEC11A) is also named as SEC11L1, SPC18, SPCS4A and belongs to the peptidase S26B family. It is a component of the microsomal signal peptidase complex which removes signal peptides from nascent proteins as they are translocated into the lumen of the endoplasmic reticulum. SEC11A has some isoforms with the molecular mass of 17-21 kDa.

## Storage

### Storage:

Store at -20°C.

### Storage Buffer:

PBS with 0.02% sodium azide and 50% glycerol pH 7.3.

Aliquoting is unnecessary for -20°C storage

\*\*\* 20ul sizes contain 0.1% BSA

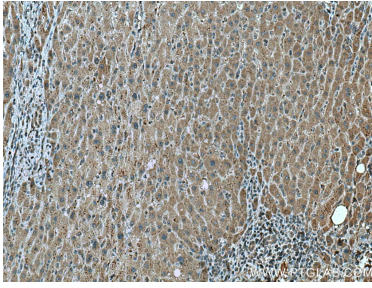
For technical support and original validation data for this product please contact:

T: 1 (888) 4PTGLAB (1-888-478-4522) (toll free  
in USA), or 1(312) 455-8498 (outside USA)

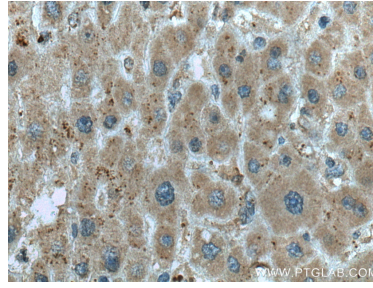
E: proteintech@ptglab.com  
W: ptglab.com

This product is exclusively available under Proteintech Group brand and is not available to purchase from any other manufacturer.

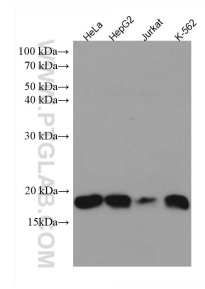
## Selected Validation Data



Immunohistochemical analysis of paraffin-embedded human liver cancer tissue slide using 67379-1-Ig (SEC11A antibody) at dilution of 1:200 (under 10x lens). Heat mediated antigen retrieval with Tris-EDTA buffer (pH 9.0).



Immunohistochemical analysis of paraffin-embedded human liver cancer tissue slide using 67379-1-Ig (SEC11A antibody) at dilution of 1:200 (under 40x lens). Heat mediated antigen retrieval with Tris-EDTA buffer (pH 9.0).



Various lysates were subjected to SDS PAGE followed by western blot with 67379-1-Ig (SEC11A antibody) at dilution of 1:5000 incubated at room temperature for 1.5 hours.