

For Research Use Only

# SEC11A Monoclonal antibody, PBS Only



Catalog Number: 67379-1-PBS

## Basic Information

<b>Catalog Number:</b> 67379-1-PBS	<b>GenBank Accession Number:</b> BC000359	<b>Purification Method:</b> Protein A purification
<b>Size:</b> 100ug , Concentration: 1 mg/ml by Nanodrop;	<b>GeneID (NCBI):</b> 23478	<b>CloneNo.:</b> 2B11G12
<b>Source:</b> Mouse	<b>UNIPROT ID:</b> P67812	
<b>Isotype:</b> IgG2b	<b>Full Name:</b> SEC11 homolog A (S. cerevisiae)	
<b>Immunogen Catalog Number:</b> AG6610	<b>Calculated MW:</b> 21 kDa	
	<b>Observed MW:</b> 17-21 kDa	

## Applications

**Tested Applications:**  
WB, IHC, Indirect ELISA

**Species Specificity:**  
Human, Mouse, Rat

## Background Information

SEC11A (Signal peptidase complex catalytic subunit SEC11A) is also named as SEC11L1, SPC18, SPCS4A and belongs to the peptidase S26B family. It is a component of the microsomal signal peptidase complex which removes signal peptides from nascent proteins as they are translocated into the lumen of the endoplasmic reticulum. SEC11A has some isoforms with the molecular mass of 17-21 kDa.

## Storage

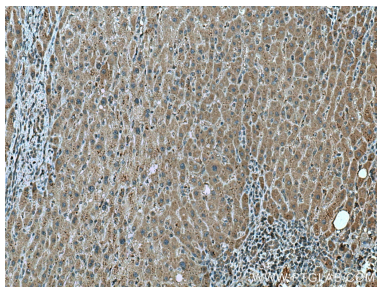
**Storage:**  
Store at -80°C.

**Storage Buffer:**  
PBS Only

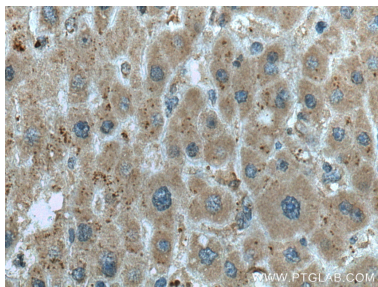
For technical support and original validation data for this product please contact:  
T: 1 (888) 4PTGLAB (1-888-478-4522) (toll free in USA), or 1(312) 455-8498 (outside USA)  
E: [proteintech@ptglab.com](mailto:proteintech@ptglab.com)  
W: [ptglab.com](http://ptglab.com)

This product is exclusively available under Proteintech Group brand and is not available to purchase from any other manufacturer.

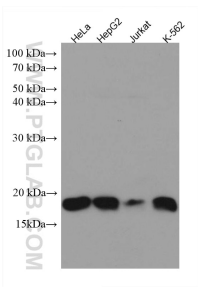
## Selected Validation Data



Immunohistochemical analysis of paraffin-embedded human liver cancer tissue slide using 67379-1-Ig (SEC11A antibody) at dilution of 1:200 (under 10x lens). Heat mediated antigen retrieval with Tris-EDTA buffer (pH 9.0). This data was developed using the same antibody clone with 67379-1-PBS in a different storage buffer formulation.



Immunohistochemical analysis of paraffin-embedded human liver cancer tissue slide using 67379-1-Ig (SEC11A antibody) at dilution of 1:200 (under 40x lens). Heat mediated antigen retrieval with Tris-EDTA buffer (pH 9.0). This data was developed using the same antibody clone with 67379-1-PBS in a different storage buffer formulation.



Various lysates were subjected to SDS PAGE followed by western blot with 67379-1-Ig (SEC11A antibody) at dilution of 1:5000 incubated at room temperature for 1.5 hours. This data was developed using the same antibody clone with 67379-1-PBS in a different storage buffer formulation.