

For Research Use Only

# TH1L Monoclonal antibody

Catalog Number: 67380-1-Ig



## Basic Information

<b>Catalog Number:</b> 67380-1-Ig	<b>GenBank Accession Number:</b> BC014952	<b>Purification Method:</b> Protein A purification
<b>Size:</b> 150ul , Concentration: 2200 µg/ml by Nanodrop and 1000 µg/ml by Bradford method using BSA as the standard;	<b>GeneID (NCBI):</b> 51497	<b>CloneNo.:</b> 1A10G2
<b>Source:</b> Mouse	<b>Full Name:</b> TH1-like (Drosophila)	<b>Recommended Dilutions:</b> WB 1:5000-1:10000 IF 1:50-1:500
<b>Isotype:</b> IgG2a	<b>Calculated MW:</b> 66 kDa	
<b>Immunogen Catalog Number:</b> AG24894	<b>Observed MW:</b> 60-66 kDa	

## Applications

**Tested Applications:**  
FC, IF, WB, ELISA

**Species Specificity:**  
Human, mouse, rat

### Positive Controls:

**WB :** A549 cells, Jurkat cells, K-562 cells, HSC-T6 cells, NIH/3T3 cells, RAW 264.7 cells, MCF-7 cells, HeLa cells, HepG2 cells

**IF :** HeLa cells,

## Background Information

### Storage

**Storage:**  
Store at -20°C. Stable for one year after shipment.

**Storage Buffer:**  
PBS with 0.02% sodium azide and 50% glycerol pH 7.3.

Aliquoting is unnecessary for -20°C storage

**\*\*\* 20ul sizes contain 0.1% BSA**

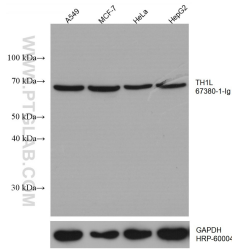
For technical support and original validation data for this product please contact:

T: 1 (888) 4PTGLAB (1-888-478-4522) (toll free in USA), or 1(312) 455-8498 (outside USA)

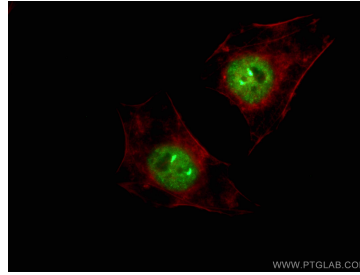
E: [proteintech@ptglab.com](mailto:proteintech@ptglab.com)  
W: [ptglab.com](http://ptglab.com)

**This product is exclusively available under Proteintech Group brand and is not available to purchase from any other manufacturer.**

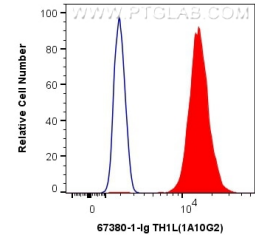
## Selected Validation Data



Various lysates were subjected to SDS PAGE followed by western blot with 67380-1-Ig (TH1L antibody) at dilution of 1:10000 incubated at room temperature for 1.5 hours. The membrane was stripped and reblotted with HRP-conjugated GAPDH Monoclonal antibody (HRP-60004) as loading control.



Immunofluorescent analysis of (4% PFA) fixed HeLa cells using 67380-1-Ig (TH1L antibody), at dilution of 1:200 and CoraLite®488-Conjugated AffiniPure Goat Anti-Mouse IgG(H+L).



$1 \times 10^6$  HeLa cells were intracellularly stained with 0.4  $\mu$ g Anti-Human TH1L (67380-1-Ig, Clone:1A10G2) and CoraLite®488-Conjugated AffiniPure Goat Anti-Mouse IgG(H+L) at dilution 1:1000 (red), or 0.4  $\mu$ g Mouse IgG2a Isotype Control (C1.18.4) (65208-1-Ig, Clone: C1.18.4) (blue). Cells were fixed and permeabilized with Transcription Factor Staining Buffer Kit (PF00011).