

For Research Use Only

PTPN2 Monoclonal antibody

Catalog Number: 67388-1-Ig



Basic Information

Catalog Number: 67388-1-Ig	GenBank Accession Number: BC016727	Purification Method: Protein G purification
Size: 150ul , Concentration: 1000 µg/ml by Nanodrop;	GeneID (NCBI): 5771	CloneNo.: 2A1D1
Source: Mouse	Full Name: protein tyrosine phosphatase, non-receptor type 2	Recommended Dilutions: WB 1:5000-1:50000 IHC 1:250-1:1000
Isotype: IgG1	Calculated MW: 49 kDa	
Immunogen Catalog Number: AG29749	Observed MW: 45-50 kDa	

Applications

Tested Applications:

IHC, WB, ELISA

Species Specificity:

Human, Mouse, Rat

Note-IHC: suggested antigen retrieval with TE buffer pH 9.0; (*) Alternatively, antigen retrieval may be performed with citrate buffer pH 6.0

Positive Controls:

WB : PC-3 cells, HeLa cells, 4T1 cells, LNCaP cells, HEK-293T cells, MCF-7 cells, Jurkat cells, HSC-T6 cells, NIH/3T3 cells, HepG2 cells, K-562 cells

IHC : human breast cancer tissue,

Background Information

PTPN2 (Tyrosine-protein phosphatase non-receptor type 2) is also named as PTPT and belongs to the protein-tyrosine phosphatase family. It may modulate beta-cell apoptosis and/or local release of inflammatory mediators in the course of a viral infection by acting, at least in part, at the pancreatic beta-cell level (PMID: 19825843). This protein has some isoforms produced by alternative splicing with the molecular mass of 40-50 kDa.

Storage

Storage:

Store at -20°C.

Storage Buffer:

PBS with 0.02% sodium azide and 50% glycerol pH 7.3.

Aliquoting is unnecessary for -20°C storage

*** 20ul sizes contain 0.1% BSA

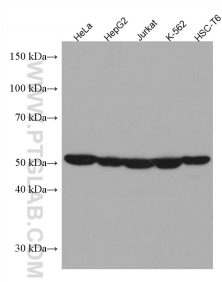
For technical support and original validation data for this product please contact:

T: 1 (888) 4PTGLAB (1-888-478-4522) (toll free in USA), or 1(312) 455-8498 (outside USA)

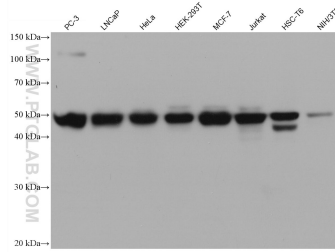
E: proteintech@ptglab.com
W: ptglab.com

This product is exclusively available under Proteintech Group brand and is not available to purchase from any other manufacturer.

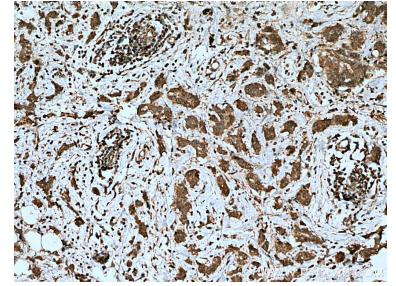
Selected Validation Data



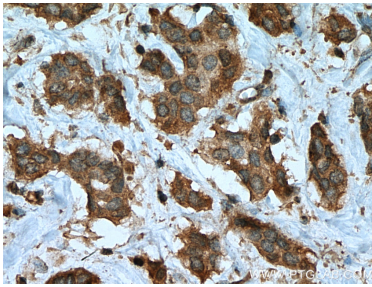
Various lysates were subjected to SDS PAGE followed by western blot with 67388-1-Ig (PTPN2 antibody) at dilution of 1:4000 incubated at room temperature for 1.5 hours.



Various lysates were subjected to SDS PAGE followed by western blot with 67388-1-Ig (PTPN2 antibody) at dilution of 1:10000 incubated at room temperature for 1.5 hours.



Immunohistochemical analysis of paraffin-embedded human breast cancer tissue slide using 67388-1-Ig (PTPN2 antibody) at dilution of 1:500 (under 10x lens). Heat mediated antigen retrieval with Tris-EDTA buffer (pH 9.0).



Immunohistochemical analysis of paraffin-embedded human breast cancer tissue slide using 67388-1-Ig (PTPN2 antibody) at dilution of 1:500 (under 40x lens). Heat mediated antigen retrieval with Tris-EDTA buffer (pH 9.0).