

For Research Use Only

FGL1 Monoclonal antibody

Catalog Number: 67391-1-Ig **1 Publications**



Basic Information

Catalog Number: 67391-1-Ig	GenBank Accession Number: BC007047	Purification Method: Protein G purification
Size: 150ul , Concentration: 2569 ug/ml by Nanodrop and 913 ug/ml by Bradford method using BSA as the standard;	GeneID (NCBI): 2267	CloneNo.: 2B11C6
Source: Mouse	UNIPROT ID: Q08830	Recommended Dilutions: WB 1:1000-1:5400 IHC 1:500-1:2000 IF/ICC 1:200-1:800
Isotype: IgG1	Full Name: fibrinogen-like 1	
Immunogen Catalog Number: AG8581	Calculated MW: 312 aa, 36 kDa	
	Observed MW: 36 kDa	

Applications

Tested Applications: WB, IHC, IF/ICC, ELISA	Positive Controls:
Cited Applications: WB	WB : pig liver tissue, human placenta tissue
Species Specificity: Human, pig	IHC : human liver tissue, human lung tissue, human liver cancer tissue
Cited Species: mouse	IF/ICC : HepG2 cells,
Note-IHC: suggested antigen retrieval with TE buffer pH 9.0; (*) Alternatively, antigen retrieval may be performed with citrate buffer pH 6.0	

Background Information

Fibrinogen-like 1 (FGL1), also termed hepatocyte-derived fibrinogen-related protein 1 (HFREP1) or hepassocin, is a predominantly liver expressed protein that has been implicated as both a hepatoprotectant and a hepatocyte mitogen. FGL1 expression is decreased in hepatocellular carcinoma (HCC), and it may play a role in the development of hepatocellular carcinomas.

Notable Publications

Author	Pubmed ID	Journal	Application
Dafei Chai	34977338	Mol Ther Oncolytics	WB

Storage

Storage:
Store at -20°C.
Storage Buffer:
PBS with 0.02% sodium azide and 50% glycerol pH 7.3.
Aliquoting is unnecessary for -20°C storage

*** 20ul sizes contain 0.1% BSA

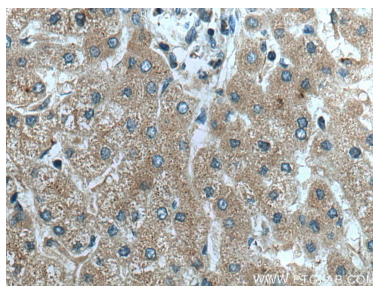
For technical support and original validation data for this product please contact:
T: 1 (888) 4PTGLAB (1-888-478-4522) (toll free in USA), or 1(312) 455-8498 (outside USA)
E: proteintech@ptglab.com
W: ptglab.com

This product is exclusively available under Proteintech Group brand and is not available to purchase from any other manufacturer.

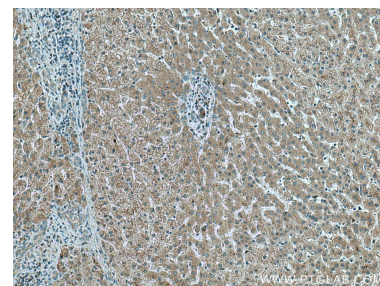
Selected Validation Data



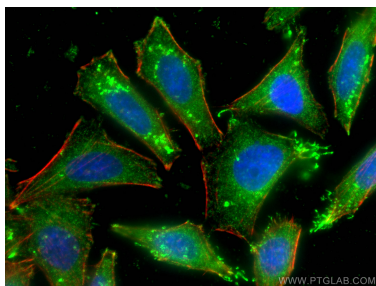
pig liver tissue were subjected to SDS PAGE followed by western blot with 67391-1-Ig (FGL1 antibody) at dilution of 1:2700 incubated at room temperature for 1.5 hours.



Immunohistochemical analysis of paraffin-embedded human liver tissue slide using 67391-1-Ig (FGL1 antibody) at dilution of 1:1000 (under 40x lens). Heat mediated antigen retrieval with Tris-EDTA buffer (pH 9.0).



Immunohistochemical analysis of paraffin-embedded human liver tissue slide using 67391-1-Ig (FGL1 antibody) at dilution of 1:1000 (under 10x lens). Heat mediated antigen retrieval with Tris-EDTA buffer (pH 9.0).



Immunofluorescent analysis of (-20°C Ethanol) fixed HepG2 cells using FGL1 antibody (67391-1-Ig, Clone: 2B11C6) at dilution of 1:400 and CoraLite®488-Conjugated Goat Anti-Mouse IgG(H+L), CL594-Phalloidin (red).