

For Research Use Only

# PPP4R1 Monoclonal antibody

Catalog Number: 67392-1-Ig **1 Publications**



## Basic Information

<b>Catalog Number:</b> 67392-1-Ig	<b>GenBank Accession Number:</b> BC060829	<b>Purification Method:</b> Protein G purification
<b>Size:</b> 150ul , Concentration: 1800 ug/ml by 9989 Nanodrop and 1000 ug/ml by Bradford method using BSA as the standard;	<b>GeneID (NCBI):</b> 9989	<b>CloneNo.:</b> 3D12G12
<b>Source:</b> Mouse	<b>UNIPROT ID:</b> Q8TF05	<b>Recommended Dilutions:</b> WB 1:2000-1:6000 IHC 1:250-1:1000 IF-P 1:200-1:800
<b>Isotype:</b> IgG1	<b>Full Name:</b> protein phosphatase 4, regulatory subunit 1	
<b>Immunogen Catalog Number:</b> AG26750	<b>Calculated MW:</b> 107 kDa	
	<b>Observed MW:</b> 120-130 kDa	

## Applications

<b>Tested Applications:</b> WB, IHC, IF-P, FC (Intra), ELISA	<b>Positive Controls:</b>
<b>Cited Applications:</b> WB, IHC, IF	<b>WB :</b> HeLa cells, HEK-293 cells, Jurkat cells, HSC-T6 cells
<b>Species Specificity:</b> human, mouse, rat	<b>IHC :</b> human liver cancer tissue,
<b>Cited Species:</b> human	<b>IF-P :</b> human liver cancer tissue, mouse liver tissue
<b>Note-IHC: suggested antigen retrieval with TE buffer pH 9.0; (*) Alternatively, antigen retrieval may be performed with citrate buffer pH 6.0</b>	

## Notable Publications

Author	Pubmed ID	Journal	Application
Xiaowei Li	38482448	Transl Cancer Res	WB,IHC,IF

## Storage

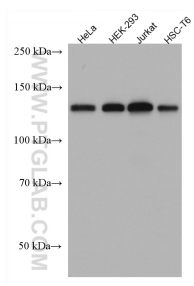
**Storage:**  
Store at -20°C. Stable for one year after shipment.  
**Storage Buffer:**  
PBS with 0.02% sodium azide and 50% glycerol pH 7.3.  
**Aliquoting is unnecessary for -20°C storage**

\*\*\* 20ul sizes contain 0.1% BSA

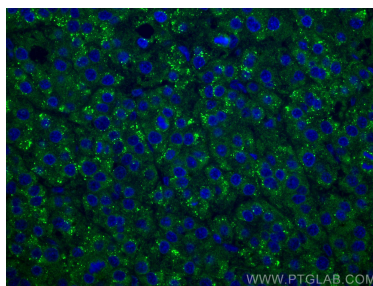
For technical support and original validation data for this product please contact:  
T: 1 (888) 4PTGLAB (1-888-478-4522) (toll free in USA), or 1(312) 455-8498 (outside USA)  
E: proteintech@ptglab.com  
W: ptglab.com

This product is exclusively available under Proteintech Group brand and is not available to purchase from any other manufacturer.

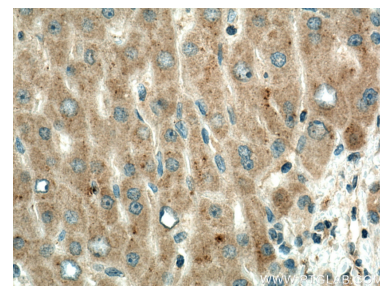
## Selected Validation Data



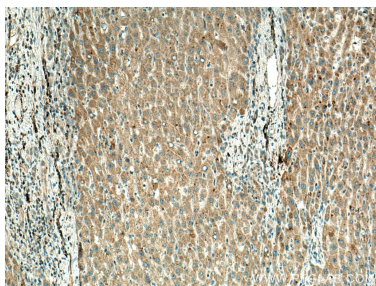
Various lysates were subjected to SDS PAGE followed by western blot with 67392-1-Ig (PPP4R1 antibody) at dilution of 1:3000 incubated at room temperature for 1.5 hours.



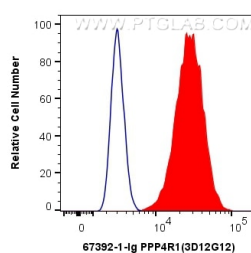
Immunofluorescent analysis of (4% PFA) fixed human liver cancer tissue using PPP4R1 antibody (67392-1-Ig, Clone: 3D12G12) at dilution of 1:400 and CoraLite®488-Conjugated Goat Anti-Mouse IgG(H+L).



Immunohistochemical analysis of paraffin-embedded human liver cancer tissue slide using 67392-1-Ig (PPP4R1 antibody) at dilution of 1:500 (under 40x lens). Heat mediated antigen retrieval with Tris-EDTA buffer (pH 9.0).



Immunohistochemical analysis of paraffin-embedded human liver cancer tissue slide using 67392-1-Ig (PPP4R1 antibody) at dilution of 1:500 (under 10x lens). Heat mediated antigen retrieval with Tris-EDTA buffer (pH 9.0).



1X10<sup>6</sup> HeLa cells were intracellularly stained with 0.4 ug Anti-Human PPP4R1 (67392-1-Ig, Clone:3D12G12) and CoraLite®488-Conjugated Goat Anti-Mouse IgG(H+L) at dilution 1:1000 (red), or 0.4 ug Control Antibody. Cells were fixed with 4% PFA and permeabilized with Flow Cytometry Perm Buffer (PF00011-C).