

For Research Use Only

KEL Monoclonal antibody

Catalog Number: 67393-1-Ig



Basic Information

Catalog Number:

67393-1-Ig

Size:

150ul, Concentration: 1300 ug/ml by 3792
Nanodrop and 1000 ug/ml by Bradford
method using BSA as the standard;

Source:

Mouse

Isotype:

IgG2a

Immunogen Catalog Number:

AG28192

GenBank Accession Number:

BC050639

GeneID (NCBI):

3792

UNIPROT ID:

P23276

Full Name:

Kell blood group, metallo-
endopeptidase

Calculated MW:

83 kDa

Observed MW:

93 kDa

Purification Method:

Protein A purification

CloneNo.:

1C8B6

Recommended Dilutions:

WB 1:3000-1:15000

Applications

Tested Applications:

WB, ELISA

Species Specificity:

Human

Positive Controls:

WB : human red blood cells,

Storage

Storage:

Store at -20°C.

Storage Buffer:

PBS with 0.02% sodium azide and 50% glycerol pH 7.3.

Aliquoting is unnecessary for -20°C storage

*** 20ul sizes contain 0.1% BSA

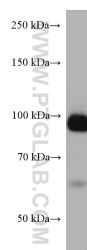
For technical support and original validation data for this product please contact:

T: 1 (888) 4PTGLAB (1-888-478-4522) (toll free
in USA), or 1(312) 455-8498 (outside USA)

E: proteintech@ptglab.com
W: ptglab.com

This product is exclusively available under Proteintech Group brand and is not available to purchase from any other manufacturer.

Selected Validation Data



human red blood cells were subjected to SDS PAGE followed by western blot with 67393-1-Ig (KEL antibody) at dilution of 1:5000 incubated at room temperature for 1.5 hours.