

For Research Use Only

KEL Monoclonal antibody

Catalog Number: 67393-1-Ig



Basic Information

Catalog Number: 67393-1-Ig	GenBank Accession Number: BC050639	Purification Method: Protein A purification
Size: 150ul , Concentration: 1300 µg/ml by Nanodrop and 1000 µg/ml by Bradford method using BSA as the standard;	GeneID (NCBI): 3792	CloneNo.: 1C8B6
Source: Mouse	Full Name: Kell blood group, metallo- endopeptidase	Recommended Dilutions: WB 1:3000-1:15000
Isotype: IgG2a	Calculated MW: 83 kDa	
Immunogen Catalog Number: AG28192	Observed MW: 93 kDa	

Applications

Tested Applications: WB,ELISA	Positive Controls: WB : human red blood cells,
Species Specificity: Human	

Background Information

Storage

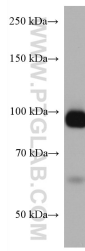
Storage:
Store at -20°C.
Storage Buffer:
PBS with 0.02% sodium azide and 50% glycerol pH 7.3.
Aliquoting is unnecessary for -20°C storage

*** 20ul sizes contain 0.1% BSA

For technical support and original validation data for this product please contact:
T: 1 (888) 4PTGLAB (1-888-478-4522) (toll free in USA), or 1(312) 455-8498 (outside USA) E: proteintech@ptglab.com W: ptglab.com

This product is exclusively available under Proteintech Group brand and is not available to purchase from any other manufacturer.

Selected Validation Data



human red blood cells were subjected to SDS PAGE followed by western blot with 67393-1-Ig (KEL antibody) at dilution of 1:5000 incubated at room temperature for 1.5 hours.