

For Research Use Only

KEL Monoclonal antibody, PBS Only

Catalog Number: 67393-1-PBS



Basic Information

Catalog Number:

67393-1-PBS

Size:

100ug , Concentration: 1 mg/ml by Nanodrop;

Source:

Mouse

Isotype:

IgG2a

Immunogen Catalog Number:

AG28192

GenBank Accession Number:

BC050639

GeneID (NCBI):

3792

UNIPROT ID:

P23276

Full Name:

Kell blood group, metallo-endopeptidase

Calculated MW:

83 kDa

Observed MW:

93 kDa

Purification Method:

Protein A purification

CloneNo.:

1C8B6

Applications

Tested Applications:

WB, Indirect ELISA

Species Specificity:

Human

Storage

Storage:

Store at -80°C.

Storage Buffer:

PBS Only

For technical support and original validation data for this product please contact:

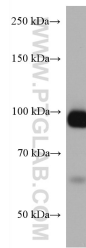
T: 1 (888) 4PTGLAB (1-888-478-4522) (toll free in USA), or 1(312) 455-8498 (outside USA)

E: proteintech@ptglab.com

W: ptglab.com

This product is exclusively available under Proteintech Group brand and is not available to purchase from any other manufacturer.

Selected Validation Data



human red blood cells were subjected to SDS PAGE followed by western blot with 67393-1-Ig (KEL antibody) at dilution of 1:5000 incubated at room temperature for 1.5 hours. This data was developed using the same antibody clone with 67393-1-PBS in a different storage buffer formulation.