

For Research Use Only

RGS14 Monoclonal antibody, PBS Only (Capture)

Catalog Number: 67394-2-PBS



Basic Information

Catalog Number: 67394-2-PBS	GenBank Accession Number: BC014094	Purification Method: Protein G purification
Size: 100ug , Concentration: 1 mg/ml by Nanodrop;	GeneID (NCBI): 10636	CloneNo.: 1H5E3
Source: Mouse	UNIPROT ID: O43566	
Isotype: IgG1	Full Name: regulator of G-protein signaling 14	
Immunogen Catalog Number: AG9477	Calculated MW: 566 aa, 61 kDa	

Applications

Tested Applications:
Cytometric bead array, Indirect ELISA

Species Specificity:
human

Product Information

67394-2-PBS targets RGS14 as part of a matched antibody pair:

MP51623-1: 67394-2-PBS capture and 67394-1-PBS detection (validated in Cytometric bead array)

MP51623-2: 67394-2-PBS capture and 67394-3-PBS detection (validated in Cytometric bead array)

Unconjugated mouse monoclonal antibody pair in PBS only (BSA and azide free) storage buffer at a concentration of 1 mg/mL, ready for conjugation.

This conjugation ready format makes antibodies ideal for use in many applications including: ELISAs, multiplex assays requiring matched pairs, mass cytometry, and multiplex imaging applications. Antibody use should be optimized by the end user for each application and assay.

Storage

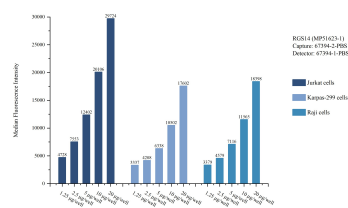
Storage:
Store at -80°C.

Storage Buffer:
PBS only, pH7.3

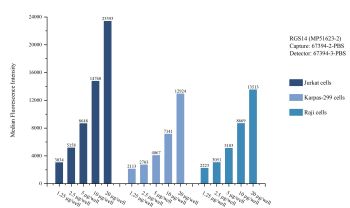
For technical support and original validation data for this product please contact:
T: 1 (888) 4PTGLAB (1-888-478-4522) (toll free in USA), or 1(312) 455-8498 (outside USA)
E: proteintech@ptglab.com
W: ptglab.com

This product is exclusively available under Proteintech Group brand and is not available to purchase from any other manufacturer.

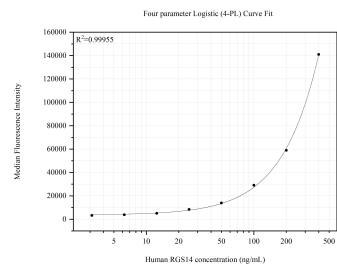
Selected Validation Data



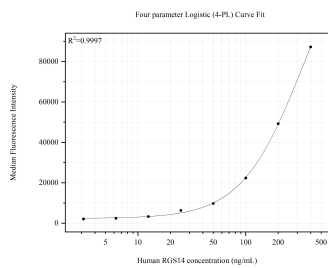
Cytometric bead array sample test of MP51623-1, RGS14 Monoclonal Matched Antibody Pair, PBS Only. Capture antibody: 67394-2-PBS. Detection antibody: 67394-1-PBS.



Cytometric bead array sample test of MP51623-2, RGS14 Monoclonal Matched Antibody Pair, PBS Only. Capture antibody: 67394-2-PBS. Detection antibody: 67394-3-PBS.



Cytometric bead array standard curve of MP51623-1, RGS14 Monoclonal Matched Antibody Pair, PBS Only. Capture antibody: 67394-2-PBS. Detection antibody: 67394-1-PBS. Standard:Ag9477. Range: 3.125-400 ng/mL



Cytometric bead array standard curve of MP51623-2, RGS14 Monoclonal Matched Antibody Pair, PBS Only. Capture antibody: 67394-2-PBS. Detection antibody: 67394-3-PBS. Standard:Ag9477. Range: 3.125-400 ng/mL