

For Research Use Only

# RBMS2 Monoclonal antibody

Catalog Number: 67395-1-Ig



## Basic Information

<b>Catalog Number:</b> 67395-1-Ig	<b>GenBank Accession Number:</b> BC027863	<b>Purification Method:</b> Protein A purification
<b>Size:</b> 150ul , Concentration: 1800 µg/ml by Nanodrop and 1000 µg/ml by Bradford method using BSA as the standard;	<b>GeneID (NCBI):</b> 5939	<b>CloneNo.:</b> 1E5C5
<b>Source:</b> Mouse	<b>Full Name:</b> RNA binding motif, single stranded interacting protein 2	<b>Recommended Dilutions:</b> WB 1:1000-1:6000
<b>Isotype:</b> IgG1	<b>Calculated MW:</b> 407 aa, 44 kDa	
<b>Immunogen Catalog Number:</b> AG27721	<b>Observed MW:</b> 44 kDa	

## Applications

<b>Tested Applications:</b> WB,ELISA	<b>Positive Controls:</b> WB : NCI-H1299 cells, U2OS cells, LNCaP cells
<b>Species Specificity:</b> Human	

## Background Information

### Storage

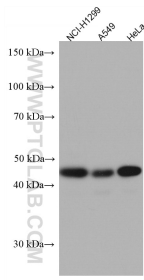
**Storage:**  
Store at -20°C.  
**Storage Buffer:**  
PBS with 0.02% sodium azide and 50% glycerol pH 7.3.  
Aliquoting is unnecessary for -20°C storage

\*\*\* 20ul sizes contain 0.1% BSA

For technical support and original validation data for this product please contact:  
T: 1 (888) 4PTGLAB (1-888-478-4522) (toll free in USA), or 1(312) 455-8498 (outside USA)  
E: proteintech@ptglab.com  
W: ptglab.com

This product is exclusively available under Proteintech Group brand and is not available to purchase from any other manufacturer.

## Selected Validation Data



Various lysates were subjected to SDS PAGE followed by western blot with 67395-1-Ig (RBMS2 antibody) at dilution of 1:3000 incubated at room temperature for 1.5 hours.