

For Research Use Only

SEMA7A Monoclonal antibody

Catalog Number: 67397-1-Ig **1 Publications**



Basic Information

Catalog Number: 67397-1-Ig	GenBank Accession Number: BC101643	Purification Method: Protein A purification
Size: 150ul , Concentration: 1900 ug/ml by Nanodrop and 1000 ug/ml by Bradford method using BSA as the standard;	GeneID (NCBI): 8482	CloneNo.: 3A5G1
Source: Mouse	UNIPROT ID: O75326	Recommended Dilutions: WB 1:2000-1:6000
Isotype: IgG2b	Full Name: semaphorin 7A, GPI membrane anchor (John Milton Hagen blood group)	
Immunogen Catalog Number: AG28804	Calculated MW: 666 aa, 75 kDa	
	Observed MW: 75-80 kDa	

Applications

Tested Applications: WB, ELISA	Positive Controls: WB : human red blood cells, human placenta tissue
Cited Applications: WB	
Species Specificity: Human	
Cited Species: mouse	

Background Information

SEMA7A, also named CD108 and SEMA7, belongs to the semaphorin family. SEMA7A is the only membrane-associated glycosylphosphatidylinositol (GPI)-linked semaphorin and plays a role in the regulation of neuronal axon outgrowth. In addition to its role in guiding axon pathfinding during neuronal development, SEMA7A has diverse functions in morphogenesis and immune cell control and regulates T cell responses via the $\alpha 1\beta 1$ integrin receptor (PMID: 31179640). SEMA7A has 2 isoforms with molecular weights of 73 and 75 kDa, respectively.

Notable Publications

Author	Pubmed ID	Journal	Application
Xuan Li	36717921	Cell Commun Signal	WB

Storage

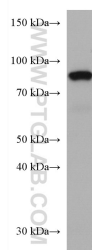
Storage:
Store at -20°C. Stable for one year after shipment.
Storage Buffer:
PBS with 0.02% sodium azide and 50% glycerol pH 7.3.
Aliquoting is unnecessary for -20°C storage

*** 20ul sizes contain 0.1% BSA

For technical support and original validation data for this product please contact:
T: 1 (888) 4PTGLAB (1-888-478-4522) (toll free in USA), or 1(312) 455-8498 (outside USA)
E: proteintech@ptglab.com
W: ptglab.com

This product is exclusively available under Proteintech Group brand and is not available to purchase from any other manufacturer.

Selected Validation Data



human red blood cells were subjected to SDS PAGE followed by western blot with 67397-1-Ig (SEMA7A antibody) at dilution of 1:5000 incubated at room temperature for 1.5 hours.