

For Research Use Only

# Caspase 4 Monoclonal antibody

Catalog Number: 67398-1-Ig 4 Publications



## Basic Information

Catalog Number: 67398-1-Ig	GenBank Accession Number: BC017839	Purification Method: Protein A purification
Size: 150ul, Concentration: 2300 ug/ml by 837 Nanodrop and 1000 ug/ml by Bradford method using BSA as the standard;	GeneID (NCBI): 837	CloneNo.: 1D1E12
Source: Mouse	UNIPROT ID: P49662	Recommended Dilutions: WB 1:2000-1:10000 IHC 1:250-1:1000 IF/ICC 1:400-1:1600
Isotype: IgG1	Full Name: caspase 4, apoptosis-related cysteine peptidase	
Immunogen Catalog Number: AG29488	Calculated MW: 377 aa, 43 kDa	
	Observed MW: 43-48 kDa	

## Applications

Tested Applications: WB, IHC, IF/ICC, ELISA	Positive Controls:
Cited Applications: WB, IHC	WB : SGC-7901 cells, A549 cells, HeLa cells, HepG2 cells, HL-60 cells
Species Specificity: human	IHC : human liver cancer tissue,
Cited Species: human	IF/ICC : HeLa cells,
<b>Note-IHC: suggested antigen retrieval with TE buffer pH 9.0; (*) Alternatively, antigen retrieval may be performed with citrate buffer pH 6.0</b>	

## Background Information

Caspase 4 (CASP4), is a member of the cysteine-aspartic acid protease (caspase) family. Sequential activation of caspases plays a central role in the execution-phase of cell apoptosis. Caspase 4 is able to cleave and activate its own precursor protein, as well as caspase 1 precursor. Overexpression of caspase 4 will induce cell apoptosis.

## Notable Publications

Author	Pubmed ID	Journal	Application
Guiying He	36129672	Hum Cell	IHC
Lei Wu	39441118	ACS Chem Neurosci	WB
Yi Zhang	39136610	Mol Carcinog	WB

## Storage

Storage:  
Store at -20°C. Stable for one year after shipment.  
Storage Buffer:  
PBS with 0.02% sodium azide and 50% glycerol pH 7.3.  
Aliquoting is unnecessary for -20°C storage

\*\*\* 20ul sizes contain 0.1% BSA

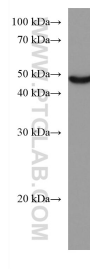
For technical support and original validation data for this product please contact:  
T: 1 (888) 4PTGLAB (1-888-478-4522) (toll free in USA), or 1(312) 455-8498 (outside USA)  
E: proteintech@ptglab.com  
W: ptglab.com

This product is exclusively available under Proteintech Group brand and is not available to purchase from any other manufacturer.

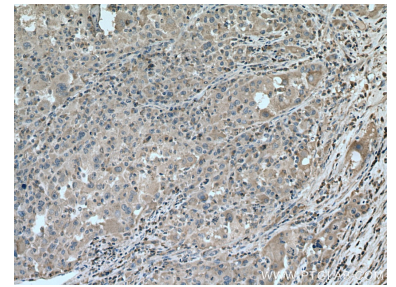
## Selected Validation Data



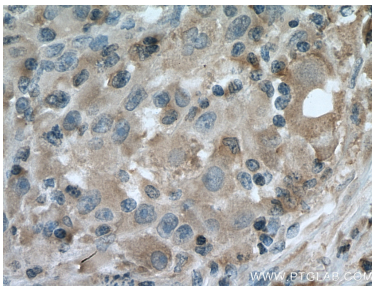
SGC-7901 cells were subjected to SDS PAGE followed by western blot with 67398-1-Ig (Caspase 4 antibody) at dilution of 1:5000 incubated at room temperature for 1.5 hours.



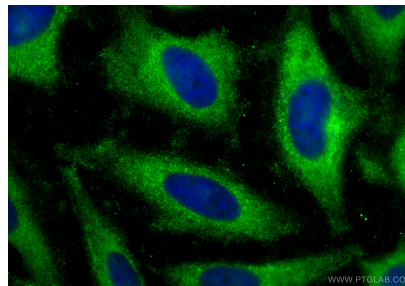
HL-60 cells were subjected to SDS PAGE followed by western blot with 67398-1-Ig (Caspase 4 antibody) at dilution of 1:5000 incubated at room temperature for 1.5 hours.



Immunohistochemical analysis of paraffin-embedded human liver cancer tissue slide using 67398-1-Ig (Caspase 4 antibody) at dilution of 1:500 (under 10x lens). Heat mediated antigen retrieval with Tris-EDTA buffer (pH 9.0).



Immunohistochemical analysis of paraffin-embedded human liver cancer tissue slide using 67398-1-Ig (Caspase 4 antibody) at dilution of 1:500 (under 40x lens). Heat mediated antigen retrieval with Tris-EDTA buffer (pH 9.0).



Immunofluorescent analysis of (-20°C Ethanol) fixed HeLa cells using Caspase 4 antibody (67398-1-Ig, Clone: 1D1E12 ) at dilution of 1:800 and Coralite® 488-Conjugated Goat Anti-Mouse IgG(H+L) (SA00013-1).