

For Research Use Only

LACTB2 Monoclonal antibody

Catalog Number: 67399-1-Ig **Featured Product**



Basic Information

Catalog Number: 67399-1-Ig	GenBank Accession Number: BC000878	Purification Method: Protein G purification
Size: 150ul, Concentration: 2000 µg/ml by Nanodrop and 1000 µg/ml by Bradford method using BSA as the standard;	GeneID (NCBI): 51110	CloneNo.: 1G6B1
Source: Mouse	Full Name: lactamase, beta 2	Recommended Dilutions: WB 1:1000-1:6000 IHC 1:300-1:1200 IF 1:200-1:800
Isotype: IgG1	Calculated MW: 288 aa, 33 kDa	
Immunogen Catalog Number: AG10231	Observed MW: 33 kDa	

Applications

Tested Applications: IF, IHC, WB, ELISA	Positive Controls:
Species Specificity: Human, Mouse	WB: A549 cells, NIH/3T3 cells, HeLa cells, HEK-293 cells, Jurkat cells
Note-IHC: suggested antigen retrieval with TE buffer pH 9.0; (*) Alternatively, antigen retrieval may be performed with citrate buffer pH 6.0	IHC: human liver cancer tissue, IF: human liver cancer tissue,

Background Information

Storage

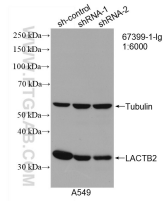
Storage:
Store at -20°C. Stable for one year after shipment.
Storage Buffer:
PBS with 0.02% sodium azide and 50% glycerol pH 7.3.
Aliquoting is unnecessary for -20°C storage

*** 20ul sizes contain 0.1% BSA

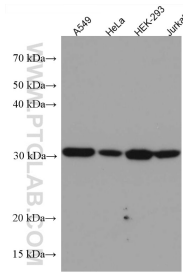
For technical support and original validation data for this product please contact:
T: 1 (888) 4PTGLAB (1-888-478-4522) (toll free in USA), or 1(312) 455-8498 (outside USA)
E: proteintech@ptglab.com
W: ptglab.com

This product is exclusively available under Proteintech Group brand and is not available to purchase from any other manufacturer.

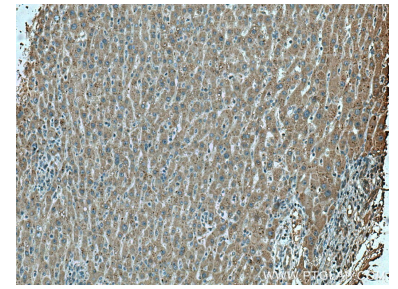
Selected Validation Data



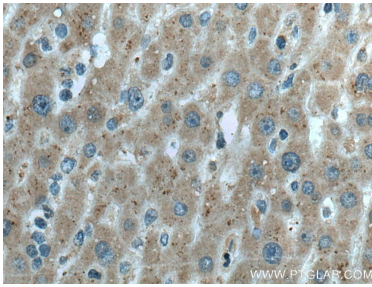
WB result of LACTB2 antibody (67399-1-Ig; 1:6000; incubated at room temperature for 1.5 hours) with sh-Control and sh-LACTB2 transfected A549 cells.



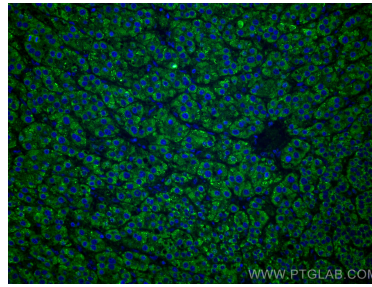
Various lysates were subjected to SDS PAGE followed by western blot with 67399-1-Ig (LACTB2 antibody) at dilution of 1:3000 incubated at room temperature for 1.5 hours.



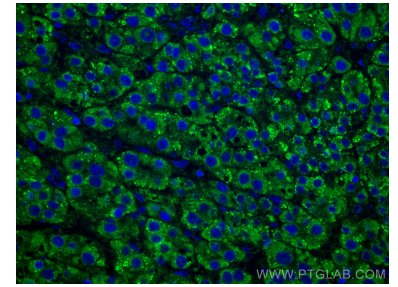
Immunohistochemical analysis of paraffin-embedded human liver cancer tissue slide using 67399-1-Ig (LACTB2 antibody) at dilution of 1:600 (under 10x lens). Heat mediated antigen retrieval with Tris-EDTA buffer (pH 9.0).



Immunohistochemical analysis of paraffin-embedded human liver cancer tissue slide using 67399-1-Ig (LACTB2 antibody) at dilution of 1:600 (under 40x lens). Heat mediated antigen retrieval with Tris-EDTA buffer (pH 9.0).



Immunofluorescent analysis of (4% PFA) fixed human liver cancer tissue using LACTB2 antibody (67399-1-Ig, Clone: 1G6B1) at dilution of 1:400 and CoraLite@488-Conjugated AffiniPure Goat Anti-Mouse IgG(H+L).



Immunofluorescent analysis of (4% PFA) fixed human liver cancer tissue using LACTB2 antibody (67399-1-Ig, Clone: 1G6B1) at dilution of 1:400 and CoraLite@488-Conjugated AffiniPure Goat Anti-Mouse IgG(H+L).