

For Research Use Only

LACTB2 Monoclonal antibody, PBS Only (Capture)



Catalog Number: 67399-1-PBS

Featured Product

Basic Information

Catalog Number: 67399-1-PBS	GenBank Accession Number: BC000878	Purification Method: Protein G purification
Size: 100ug, Concentration: 1mg/ml by Nanodrop;	GeneID (NCBI): 51110	CloneNo.: 1G6B1
Source: Mouse	UNIPROT ID: Q53H82	
Isotype: IgG1	Full Name: lactamase, beta 2	
Immunogen Catalog Number: AG10231	Calculated MW: 288 aa, 33 kDa	
	Observed MW: 33 kDa	

Applications

Tested Applications:
WB, IHC, IF/ICC, IF-P, Cytometric bead array, Indirect ELISA

Species Specificity:
human, mouse

Product Information

67399-1-PBS targets LACTB2 as part of a matched antibody pair:

MP50726-4: 67399-1-PBS capture and 67399-4-PBS detection (validated in Cytometric bead array)

Unconjugated mouse monoclonal antibody pair in PBS only (BSA and azide free) storage buffer at a concentration of 1 mg/mL, ready for conjugation.

This conjugation ready format makes antibodies ideal for use in many applications including: ELISAs, multiplex assays requiring matched pairs, mass cytometry, and multiplex imaging applications. Antibody use should be optimized by the end user for each application and assay.

Storage

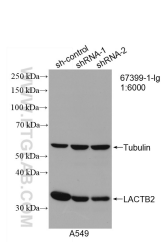
Storage:
Store at -80°C.

Storage Buffer:
PBS Only

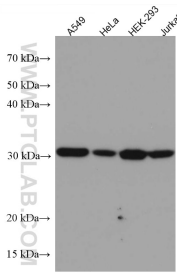
For technical support and original validation data for this product please contact:
T: 1 (888) 4PTGLAB (1-888-478-4522) (toll free in USA), or 1(312) 455-8498 (outside USA)
E: proteintech@ptglab.com
W: ptglab.com

This product is exclusively available under Proteintech Group brand and is not available to purchase from any other manufacturer.

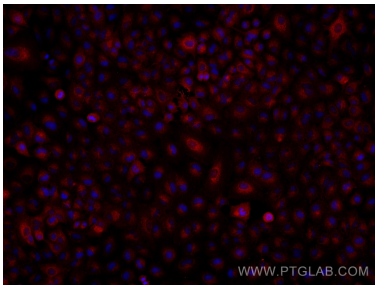
Selected Validation Data



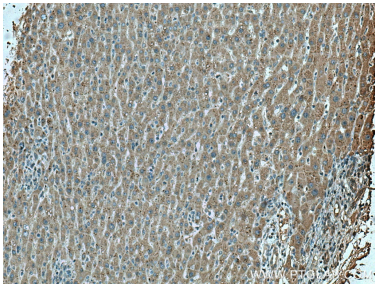
WB result of LACTB2 antibody (67399-1-Ig; 1:6000; incubated at room temperature for 1.5 hours) with sh-Control and sh-LACTB2 transfected A549 cells. This data was developed using the same antibody clone with 67399-1-PBS in a different storage buffer formulation.



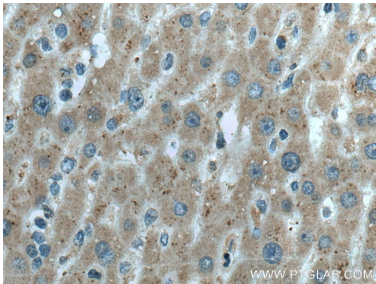
Various lysates were subjected to SDS PAGE followed by western blot with 67399-1-Ig (LACTB2 antibody) at dilution of 1:3000 incubated at room temperature for 1.5 hours. This data was developed using the same antibody clone with 67399-1-PBS in a different storage buffer formulation.



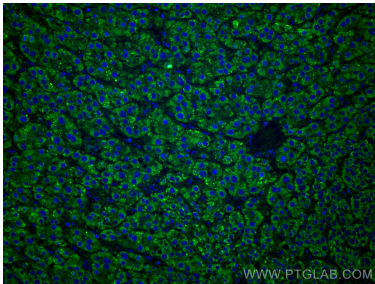
Immunofluorescent analysis of (4% PFA) fixed A549 cells using LACTB2 antibody (67399-1-Ig, Clone: 1G6B1) at dilution of 1:2000 and Multi-rAb CoraLite® Plus 594-Goat Anti-Mouse Recombinant Secondary Antibody (H+L) (Cat.NO. RGAM004). This data was developed using the same antibody clone with 67399-1-PBS in a different storage buffer formulation.



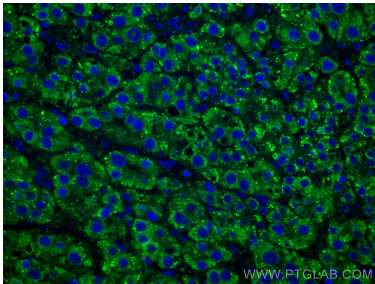
Immunohistochemical analysis of paraffin-embedded human liver cancer tissue slide using 67399-1-Ig (LACTB2 antibody) at dilution of 1:600 (under 10x lens). Heat mediated antigen retrieval with Tris-EDTA buffer (pH 9.0). This data was developed using the same antibody clone with 67399-1-PBS in a different storage buffer formulation.



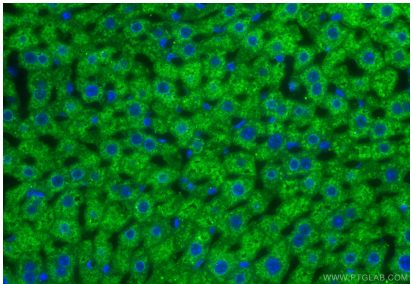
Immunohistochemical analysis of paraffin-embedded human liver cancer tissue slide using 67399-1-Ig (LACTB2 antibody) at dilution of 1:600 (under 40x lens). Heat mediated antigen retrieval with Tris-EDTA buffer (pH 9.0). This data was developed using the same antibody clone with 67399-1-PBS in a different storage buffer formulation.



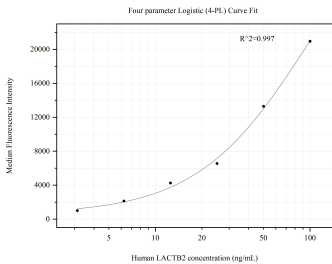
Immunofluorescent analysis of (4% PFA) fixed human liver cancer tissue using LACTB2 antibody (67399-1-Ig, Clone: 1G6B1) at dilution of 1:400 and CoraLite® 488-Conjugated AffiniPure Goat Anti-Mouse IgG(H+L). This data was developed using the same antibody clone with 67399-1-PBS in a different storage buffer formulation.



Immunofluorescent analysis of (4% PFA) fixed human liver cancer tissue using LACTB2 antibody (67399-1-Ig, Clone: 1G6B1) at dilution of 1:400 and CoraLite® 488-Conjugated AffiniPure Goat Anti-Mouse IgG(H+L). This data was developed using the same antibody clone with 67399-1-PBS in a different storage buffer formulation.



Immunofluorescent analysis of (4% PFA) fixed paraffin-embedded mouse liver tissue using LACTB2 antibody (67399-1-Ig, Clone: 1G6B1) at dilution of 1:400 and CoraLite® 488-Conjugated Goat Anti-Mouse IgG(H+L) (SA00013-1). Heat mediated antigen retrieval with Tris-EDTA buffer (pH 9.0). This data was developed using the same antibody clone with 67399-1-PBS in a different storage buffer formulation.



Cytometric bead array standard curve of MP50726-4, LACTB2 Monoclonal Matched Antibody Pair, PBS Only. Capture antibody: 67399-1-PBS. Detection antibody: 67399-4-PBS. Standard:Ag10231. Range: 3.125-100 ng/mL.