

For Research Use Only

Chicken IgY Monoclonal antibody

Catalog Number: 67405-1-Ig **1 Publications**



Basic Information

Catalog Number: 67405-1-Ig	GenBank Accession Number: GeneID (NCBI):	Purification Method: Protein A purification
Size: 150ul , Concentration: 2609 µg/ml by Nanodrop and 1000 µg/ml by Bradford method using BSA as the standard;	Full Name: Observed MW: 180 kDa, 70 kDa	CloneNo.: 1E12G2
Source: Mouse		Recommended Dilutions: WB 1:5000-1:50000
Isotype: IgG2a		

Applications

Tested Applications: WB, ELISA	Positive Controls: WB : Chicken IgY, Chicken egg
Species Specificity: Chicken	

Background Information

IgY (immunoglobulin Y) is a type of immunoglobulin found in birds and reptiles. High concentration of IgY exists in chicken egg yolk. In chickens, IgY is functional same to IgG. IgY antibodies do not cross-react with Fc receptors, mammalian immunoglobulins such as rheumatoid factors and HAMA or activate the complement system thus could reduce false positive results in immunological assays. This antibody was generated from chicken IgY that extracted from chicken eggs. This product recognizes the heavy chain of chicken IgY and can detect the contact form of chicken IgY (~180 kDa) and reduced form (~70 kDa).

Notable Publications

Author	Pubmed ID	Journal	Application
Hao Li	35550770	Carbohydr Polym	

Storage

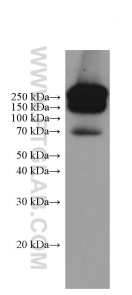
Storage:
Store at -20°C.
Storage Buffer:
PBS with 0.02% sodium azide and 50% glycerol pH 7.3.
Aliquoting is unnecessary for -20°C storage

*** 20ul sizes contain 0.1% BSA

For technical support and original validation data for this product please contact:
T: 1 (888) 4PTGLAB (1-888-478-4522) (toll free in USA), or 1(312) 455-8498 (outside USA) E: proteintech@ptglab.com W: ptglab.com

This product is exclusively available under Proteintech Group brand and is not available to purchase from any other manufacturer.

Selected Validation Data



100 nL chicken egg were subjected to SDS-PAGE at non-reducing condition followed by western blot with 67405-1-Ig (chicken IgY antibody) at dilution of 1:10000 incubated at room temperature for 1.5 hours.