

For Research Use Only

VEGFR2/KDR Monoclonal antibody

Catalog Number: 67407-1-Ig **10 Publications**



Basic Information

Catalog Number: 67407-1-Ig	GenBank Accession Number: BC131822	Purification Method: Protein G purification
Size: 150ul , Concentration: 2100 ug/ml by Nanodrop and 1000 ug/ml by Bradford method using BSA as the standard;	GeneID (NCBI): 3791	CloneNo.: 1G2A8
Source: Mouse	UNIPROT ID: P35968	Recommended Dilutions: WB 1:1000-1:8000
Isotype: IgG1	Full Name: kinase insert domain receptor (a type III receptor tyrosine kinase)	
Immunogen Catalog Number: AG24589	Calculated MW: 1356 aa, 152 kDa	
	Observed MW: 230 kDa	

Applications

Tested Applications: WB, ELISA	Positive Controls: WB : human placenta tissue,
Cited Applications: WB, IHC, IF	
Species Specificity: human	
Cited Species: human	

Background Information

KDR, also named as VEGFR-2, FLK1 and CD309, is a receptor for VEGF or VEGFC. KDR which belongs to the protein kinase superfamily, has a tyrosine-protein kinase activity. The VEGF-kinase ligand/receptor signaling system plays a key role in vascular development and regulation of vascular permeability. In case of HIV-1 infection, the interaction with extracellular viral Tat protein seems to enhance angiogenesis in Kaposi's sarcoma lesions. KDR functions as the main mediator of VEGF-induced endothelial proliferation, survival, migration, tubular morphogenesis and sprouting. Mutations of this gene are implicated in infantile capillary hemangiomas.

Notable Publications

Author	Pubmed ID	Journal	Application
Xiaofeng Dai	31636652	Front Genet	WB
Hongwei Jin	34150622	Front Oncol	WB
Hou-Fu Xia	35916917	Cell Tissue Res	IHC,IF

Storage

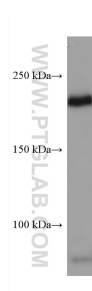
Storage:
Store at -20°C. Stable for one year after shipment.
Storage Buffer:
PBS with 0.02% sodium azide and 50% glycerol pH 7.3.
Aliquoting is unnecessary for -20°C storage

*** 20ul sizes contain 0.1% BSA

For technical support and original validation data for this product please contact:
T: 1 (888) 4PTGLAB (1-888-478-4522) (toll free in USA), or 1(312) 455-8498 (outside USA)
E: proteintech@ptglab.com
W: ptglab.com

This product is exclusively available under Proteintech Group brand and is not available to purchase from any other manufacturer.

Selected Validation Data



human placenta tissue were subjected to SDS PAGE followed by western blot with 67407-1-Ig (VEGFR2 antibody) at dilution of 1:4000 incubated at room temperature for 1.5 hours.