

For Research Use Only

MAT1A Monoclonal antibody

Catalog Number: 67408-1-Ig



Basic Information

Catalog Number: 67408-1-Ig	GenBank Accession Number: BC018359	Purification Method: Protein A purification
Size: 150ul , Concentration: 1600 µg/ml by Nanodrop and 1000 µg/ml by Bradford method using BSA as the standard;	GeneID (NCBI): 4143	CloneNo.: 2F1C1
Source: Mouse	Full Name: methionine adenosyltransferase I, alpha	Recommended Dilutions: WB 1:1000-1:6000 IF 1:400-1:1600
Isotype: IgG2a	Calculated MW: 395 aa, 44 kDa	
Immunogen Catalog Number: AG3076	Observed MW: 49 kDa	

Applications

Tested Applications: IF, WB, ELISA	Positive Controls:
Species Specificity: Human, mouse, rat	WB : HepG2 cells, HeLa cells, MCF-7 cells, Jurkat cells, HSC-T6 cells, NIH/3T3 cells, 4T1 cells
	IF : HeLa cells,

Background Information

Methionine adenosyltransferase (MAT) is the enzyme that catalyzes the synthesis of S-adenosylmethionine (AdoMet), the main donor of methyl groups in the cell. In mammals MAT is encoded by two different genes, MAT1A and MAT2A. MAT1A is expressed only in the mature liver whereas fetal hepatocytes, extrahepatic tissues and liver cancer cells express MAT2A.

Storage

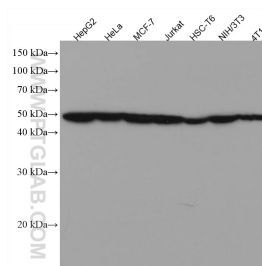
Storage:
Store at -20°C. Stable for one year after shipment.
Storage Buffer:
PBS with 0.02% sodium azide and 50% glycerol pH 7.3.
Aliquoting is unnecessary for -20°C storage

*** 20ul sizes contain 0.1% BSA

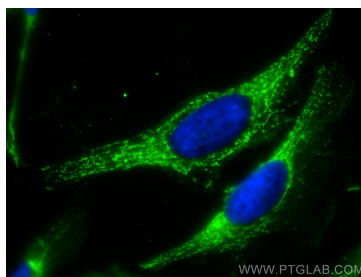
For technical support and original validation data for this product please contact:
T: 1 (888) 4PTGLAB (1-888-478-4522) (toll free in USA), or 1(312) 455-8498 (outside USA)
E: proteintech@ptglab.com
W: ptglab.com

This product is exclusively available under Proteintech Group brand and is not available to purchase from any other manufacturer.

Selected Validation Data



Various lysates were subjected to SDS PAGE followed by western blot with 67408-1-Ig (MAT1A antibody) at dilution of 1:3000 incubated at room temperature for 1.5 hours.



Immunofluorescent analysis of (-20°C Methanol) fixed HeLa cells using MAT1A antibody (67408-1-Ig, Clone: 2F1C1) at dilution of 1:800 and CoraLite® 488-Conjugated AffiniPure Goat Anti-Mouse IgG(H+L).