

For Research Use Only

SEC24D Monoclonal antibody

Catalog Number: 67409-1-Ig



Basic Information

Catalog Number:

67409-1-Ig

Size:

150ul, Concentration: 1800 ug/ml by 9871
Nanodrop and 1000 ug/ml by Bradford
method using BSA as the standard;

Source:

Mouse

Isotype:

IgG2a

Immunogen Catalog Number:

AG4657

GenBank Accession Number:

BC035761

GeneID (NCBI):

9871

UNIPROT ID:

O94855

Full Name:

SEC24 family, member D (S.
cerevisiae)

Calculated MW:

1033 aa, 113 kDa

Observed MW:

113 kDa

Purification Method:

Protein A purification

CloneNo.:

3G5G9

Recommended Dilutions:

WB 1:2000-1:8000

IF/ICC 1:200-1:800

Applications

Tested Applications:

WB, IF/ICC, ELISA

Species Specificity:

human

Positive Controls:

WB : Jurkat cells, HepG2 cells, HeLa cells

IF/ICC : HepG2 cells,

Background Information

COPII-coated vesicles mediate anterograde transport from the ER to the Golgi apparatus. COPII is composed of three parts: two coat protein complexes (Sec23/24 complex and Sec13/31 complex) and one small GTP-binding protein, Sar1 (PMID: 9568718). Sec24 subunit of the coat complex has been implicated in cargo recognition (PMID: 17316621). In mammal cells there are four Sec24 isoforms, termed Sec24A, Sec24B, Sec24C, and Sec24D (PMID: 10329445).

Storage

Storage:

Store at -20°C. Stable for one year after shipment.

Storage Buffer:

PBS with 0.02% sodium azide and 50% glycerol pH 7.3.

Aliquoting is unnecessary for -20°C storage

*** 20ul sizes contain 0.1% BSA

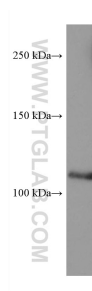
For technical support and original validation data for this product please contact:

T: 1 (888) 4PTGLAB (1-888-478-4522) (toll free
in USA), or 1(312) 455-8498 (outside USA)

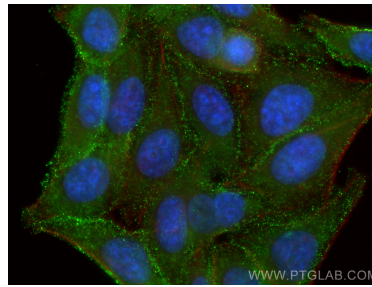
E: proteintech@ptglab.com
W: ptglab.com

This product is exclusively available under Proteintech Group brand and is not available to purchase from any other manufacturer.

Selected Validation Data



Jurkat cells were subjected to SDS PAGE followed by western blot with 67409-1-Ig (SEC24D antibody) at dilution of 1:5000 incubated at room temperature for 1.5 hours.



Immunofluorescent analysis of (-20°C Ethanol) fixed HepG2 cells using SEC24D antibody (67409-1-Ig, Clone: 3G5G9) at dilution of 1:400 and Multi-rAb CoraLite ® Plus 488-Goat Anti-Mouse Recombinant Secondary Antibody (H+L) (RGAM002), CL594-Phalloidin (red).