

For Research Use Only

CAP2 Monoclonal antibody

Catalog Number: 67412-1-Ig



Basic Information

Catalog Number: 67412-1-Ig	GenBank Accession Number: BC008481	Purification Method: Protein A purification
Size: 150ul , Concentration: 1800 ug/ml by Nanodrop and 1000 ug/ml by Bradford method using BSA as the standard;	GeneID (NCBI): 10486	CloneNo.: 1G7D2
Source: Mouse	UNIPROT ID: P40123	Recommended Dilutions: WB 1:2000-1:10000
Isotype: IgG2a	Full Name: CAP, adenylate cyclase-associated protein, 2 (yeast)	
Immunogen Catalog Number: AG8622	Calculated MW: 477 aa, 53 kDa	
	Observed MW: 51-53 kDa	

Applications

Tested Applications: WB, ELISA	Positive Controls: WB : A549 cells, HeLa cells, HepG2 cells, PC-3 cells, COLO 320 cells
Species Specificity: Human	

Background Information

CAPs (CAP1 and CAP2) are evolutionarily conserved proteins with roles in regulating the actin cytoskeleton and in signal transduction. CAP2 is predominantly expressed in brain, heart and skeletal muscle, and skin. It is found in the nucleus in undifferentiated myoblasts and at the M-line of differentiated myotubes. Overexpression of CAP2 has been reported in many cancers, including hepatocellular carcinoma (HCC), human breast cancer, and malignant melanoma.

Storage

Storage:
Store at -20°C. Stable for one year after shipment.
Storage Buffer:
PBS with 0.02% sodium azide and 50% glycerol pH 7.3.
Aliquoting is unnecessary for -20°C storage

*** 20ul sizes contain 0.1% BSA

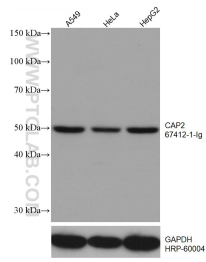
For technical support and original validation data for this product please contact:

T: 1 (888) 4PTGLAB (1-888-478-4522) (toll free in USA), or 1(312) 455-8498 (outside USA)

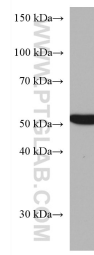
E: proteintech@ptglab.com
W: ptglab.com

This product is exclusively available under Proteintech Group brand and is not available to purchase from any other manufacturer.

Selected Validation Data



Various lysates were subjected to SDS PAGE followed by western blot with 67412-1-Ig (CAP2 antibody) at dilution of 1:5000 incubated at room temperature for 1.5 hours. The membrane was stripped and reblotted with HRP-conjugated GAPDH Monoclonal antibody (HRP-60004) as loading control.



HepG2 cells were subjected to SDS PAGE followed by western blot with 67412-1-Ig (CAP2 antibody) at dilution of 1:3000 incubated at room temperature for 1.5 hours.