

For Research Use Only

CYP21A2 Monoclonal antibody

Catalog Number: 67421-1-Ig



Basic Information

Catalog Number: 67421-1-Ig	GenBank Accession Number: NM_000500	Purification Method: Protein A purification
Size: 150ul , Concentration: 2100 ug/ml by 1589 Nanodrop and 1000 ug/ml by Bradford method using BSA as the standard;	GeneID (NCBI): 1589	CloneNo.: 1G2G6
Source: Mouse	UNIPROT ID: P08686	Recommended Dilutions: WB 1:2000-1:10000 IF/ICC 1:400-1:1600
Isotype: IgG1	Full Name: cytochrome P450, family 21, subfamily A, polypeptide 2	
Immunogen Catalog Number: AG26292	Calculated MW: 56 kDa	
	Observed MW: 53-56 kDa	

Applications

Tested Applications: WB, IF/ICC, ELISA	Positive Controls:
Species Specificity: Human, Pig	WB : HepG2 cells, PC-12 cells, pig adrenal gland tissue IF/ICC : PC-12 cells,

Storage

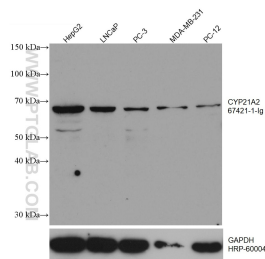
Storage:
Store at -20°C. Stable for one year after shipment.
Storage Buffer:
PBS with 0.02% sodium azide and 50% glycerol pH 7.3.
Aliquoting is unnecessary for -20°C storage

*** 20ul sizes contain 0.1% BSA

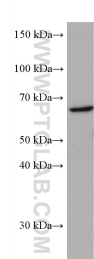
For technical support and original validation data for this product please contact:
T: 1 (888) 4PTGLAB (1-888-478-4522) (toll free in USA), or 1(312) 455-8498 (outside USA)
E: proteintech@ptglab.com
W: ptglab.com

This product is exclusively available under Proteintech Group brand and is not available to purchase from any other manufacturer.

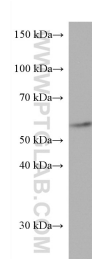
Selected Validation Data



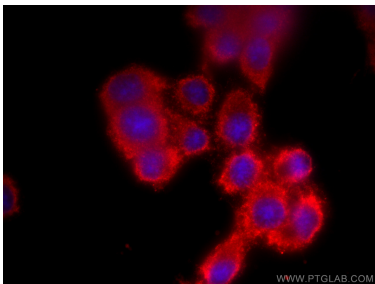
Various lysates were subjected to SDS PAGE followed by western blot with 67421-1-Ig (CYP21A2 antibody) at dilution of 1:5000 incubated at room temperature for 1.5 hours. The membrane was stripped and reblotted with HRP-conjugated GAPDH Monoclonal antibody (HRP-60004) as loading control.



PC-12 cells were subjected to SDS PAGE followed by western blot with 67421-1-Ig (CYP21A2 antibody) at dilution of 1:3000 incubated at room temperature for 1.5 hours.



pig adrenal gland tissue were subjected to SDS PAGE followed by western blot with 67421-1-Ig (CYP21A2 antibody) at dilution of 1:3000 incubated at room temperature for 1.5 hours.



Immunofluorescent analysis of (-20°C Methanol) fixed PC-12 cells using CYP21A2 antibody (67421-1-Ig, Clone: 1G2G6) at dilution of 1:800 and CoraLite®594-Conjugated Goat Anti-Mouse IgG(H+L).