

For Research Use Only

# Sam50 Monoclonal antibody

Catalog Number: 67425-1-Ig **1 Publications**



## Basic Information

<b>Catalog Number:</b> 67425-1-Ig	<b>GenBank Accession Number:</b> BC007830	<b>Purification Method:</b> Protein A purification
<b>Size:</b> 150ul , Concentration: 1700 ug/ml by Nanodrop and 1000 ug/ml by Bradford method using BSA as the standard;	<b>GeneID (NCBI):</b> 25813	<b>CloneNo.:</b> 2H6H9
<b>Source:</b> Mouse	<b>UNIPROT ID:</b> Q9Y512	<b>Recommended Dilutions:</b> IF/ICC 1:200-1:800
<b>Isotype:</b> IgG1	<b>Full Name:</b> sorting and assembly machinery component 50 homolog (S. cerevisiae)	
<b>Immunogen Catalog Number:</b> AG15155	<b>Calculated MW:</b> 469 aa, 52 kDa	
	<b>Observed MW:</b> 52 kDa	

## Applications

<b>Tested Applications:</b> IF/ICC, ELISA	<b>Positive Controls:</b> IF/ICC : HeLa cells, HepG2 cells
<b>Cited Applications:</b> IF	
<b>Species Specificity:</b> human	
<b>Cited Species:</b> mouse	

## Background Information

Sam50, encoded by the SAMM50 gene, is an essential protein of the mitochondrial outer membrane (OMM). It contains a beta-barrel domain conserved from bacteria to man (PMID: 14570913). Sam50 is a part of the sorting and assembly machinery (SAM) necessary for the assembly of beta-barrel proteins in the OMM (PMID: 22252321). It is crucial for maintaining mitochondrial shape, morphology of mitochondrial cristae, and assembly of the mitochondrial respiratory chain complexes (PMID: 26587038; 22252321; 25781180). Polymorphisms in the SAMM50 gene have been associated with development and progression of nonalcoholic fatty liver disease (PMID: 23535911).

## Notable Publications

Author	Pubmed ID	Journal	Application
Renming Fan	38572099	Acta Pharm Sin B	IF

## Storage

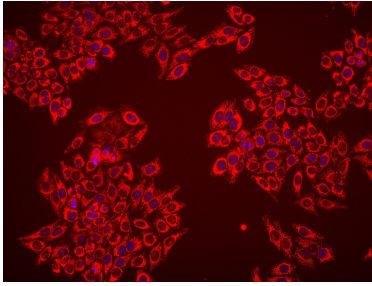
**Storage:**  
Store at -20°C. Stable for one year after shipment.  
**Storage Buffer:**  
PBS with 0.02% sodium azide and 50% glycerol pH 7.3.  
Aliquoting is unnecessary for -20°C storage

**\*\*\* 20ul sizes contain 0.1%BSA**

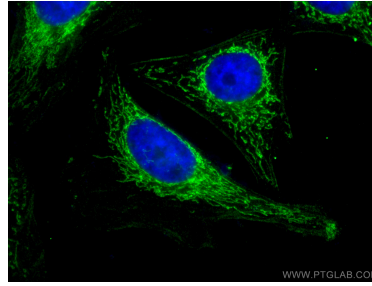
For technical support and original validation data for this product please contact:  
T: 1 (888) 4PTGLAB (1-888-478-4522) (toll free in USA), or 1(312) 455-8498 (outside USA)  
E: proteintech@ptglab.com  
W: ptglab.com

This product is exclusively available under Proteintech Group brand and is not available to purchase from any other manufacturer.

## Selected Validation Data



Immunofluorescent analysis of (4% PFA) fixed HepG2 cells using Sam50 antibody (67425-1-Ig, Clone: 2H6H9 ) at dilution of 1:1500 and Multi-rAb CoraLite® Plus 594-Goat Anti-Mouse Recombinant Secondary Antibody (H+L) (Cat.NO. RGAM004).



Immunofluorescent analysis of (4% PFA) fixed HeLa cells using Sam50 antibody (67425-1-Ig, Clone: 2H6H9 ) at dilution of 1:400 and CoraLite® 488-Conjugated AffiniPure Goat Anti-Mouse IgG(H+L), CL594-Phalloidin (red).