

For Research Use Only

Sam50 Monoclonal antibody

Catalog Number: 67425-1-Ig **1 Publications**



Basic Information

Catalog Number: 67425-1-Ig	GenBank Accession Number: BC007830	Purification Method: Protein G purification
Size: 150ul , Concentration: 1700 ug/ml by Nanodrop and 1000 ug/ml by Bradford method using BSA as the standard;	GeneID (NCBI): 25813	CloneNo.: 2H6H9
Source: Mouse	UNIPROT ID: Q9Y512	Recommended Dilutions: IF/ICC 1:200-1:800
Isotype: IgG1	Full Name: sorting and assembly machinery component 50 homolog (S. cerevisiae)	
Immunogen Catalog Number: AG15155	Calculated MW: 469 aa, 52 kDa	
	Observed MW: 52 kDa	

Applications

Tested Applications: IF/ICC, ELISA	Positive Controls: IF/ICC : HeLa cells, HepG2 cells
Cited Applications: IF	
Species Specificity: human	
Cited Species: mouse	

Background Information

Sam50, encoded by the SAMM50 gene, is an essential protein of the mitochondrial outer membrane (OMM). It contains a beta-barrel domain conserved from bacteria to man (PMID: 14570913). Sam50 is a part of the sorting and assembly machinery (SAM) necessary for the assembly of beta-barrel proteins in the OMM (PMID: 22252321). It is crucial for maintaining mitochondrial shape, morphology of mitochondrial cristae, and assembly of the mitochondrial respiratory chain complexes (PMID: 26587038; 22252321; 25781180). Polymorphisms in the SAMM50 gene have been associated with development and progression of nonalcoholic fatty liver disease (PMID: 23535911).

Notable Publications

Author	Pubmed ID	Journal	Application
Renming Fan	38572099	Acta Pharm Sin B	IF

Storage

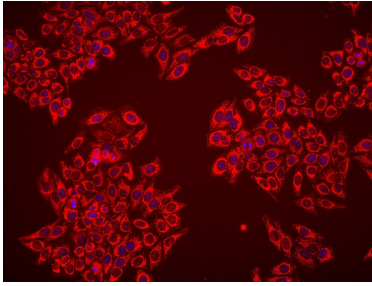
Storage:
Store at -20°C. Stable for one year after shipment.
Storage Buffer:
PBS with 0.02% sodium azide and 50% glycerol, pH7.3
Aliquoting is unnecessary for -20°C storage

*** 20ul sizes contain 0.1% BSA

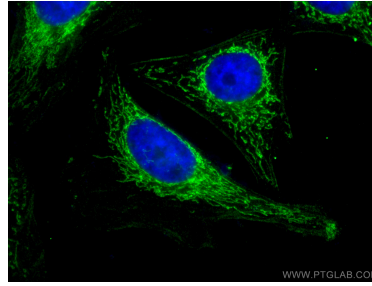
For technical support and original validation data for this product please contact:
T: 1 (888) 4PTGLAB (1-888-478-4522) (toll free in USA), or 1(312) 455-8498 (outside USA)
E: proteintech@ptglab.com
W: ptglab.com

This product is exclusively available under Proteintech Group brand and is not available to purchase from any other manufacturer.

Selected Validation Data



Immunofluorescent analysis of (4% PFA) fixed HepG2 cells using Sam50 antibody (67425-1-Ig, Clone: 2H6H9) at dilution of 1:1500 and Multi-rAb CoraLite® Plus 594-Goat Anti-Mouse Recombinant Secondary Antibody (H+L) (Cat.NO. RGAM004).



Immunofluorescent analysis of (4% PFA) fixed HeLa cells using Sam50 antibody (67425-1-Ig, Clone: 2H6H9) at dilution of 1:400 and CoraLite® 488-Conjugated AffiniPure Goat Anti-Mouse IgG(H+L), CL594-Phalloidin (red).