

# KLK11 Monoclonal antibody

Catalog Number: 67427-1-Ig **2 Publications**

## Basic Information

<b>Catalog Number:</b> 67427-1-Ig	<b>GenBank Accession Number:</b> BC022068	<b>Purification Method:</b> Protein A purification
<b>Size:</b> 150ul , Concentration: 2000 ug/ml by Nanodrop and 1000 ug/ml by Bradford method using BSA as the standard;	<b>GeneID (NCBI):</b> 11012	<b>CloneNo.:</b> 1E2B4
<b>Source:</b> Mouse	<b>UNIPROT ID:</b> Q9UBX7	<b>Recommended Dilutions:</b> WB 1:5000-1:50000 IHC 1:500-1:2000 IF-P 1:200-1:800
<b>Isotype:</b> IgG1	<b>Full Name:</b> kallikrein-related peptidase 11	
<b>Immunogen Catalog Number:</b> AG29895	<b>Calculated MW:</b> 250 aa, 27 kDa	
	<b>Observed MW:</b> 30-40 kDa	

## Applications

<b>Tested Applications:</b> WB, IHC, IF-P, ELISA	<b>Positive Controls:</b>
<b>Cited Applications:</b> WB, IHC	<b>WB :</b> TT cells, DU 145 cells, pig brain tissue, LNCaP cells, PC-3 cells, Jurkat cells, rat brain tissue, A431 cells, HaCaT cells, HT-29 cells, SW 1990 cells, mouse brain tissue, rat skin tissue
<b>Species Specificity:</b> human, mouse, rat, pig	<b>IHC :</b> human breast cancer tissue, human prostate cancer tissue
<b>Cited Species:</b> human	<b>IF-P :</b> human breast cancer tissue,
<b>Note-IHC: suggested antigen retrieval with TE buffer pH 9.0; (*) Alternatively, antigen retrieval may be performed with citrate buffer pH 6.0</b>	

## Background Information

KLK11(Kallikrein-11) is also named as PRSS20, TLSP and belongs to the peptidase S1 family and Kallikrein subfamily. It is a multifunctional protease cleaving several substrates for kallikrein and trypsin and involved in normal physiology processes in bronchus. This full length protein has a signal peptide, a propeptide and four glycosylation sites. It has 4 isoforms produced by alternative splicing with the molecular weight of 31 kDa, 27 kDa, 34 kDa and 30 kDa.

## Notable Publications

Author	Pubmed ID	Journal	Application
Ruimin Zhao	33420975	J Bioenerg Biomembr	WB
Yi Ding	37971062	Carcinogenesis	WB,IHC

## Storage

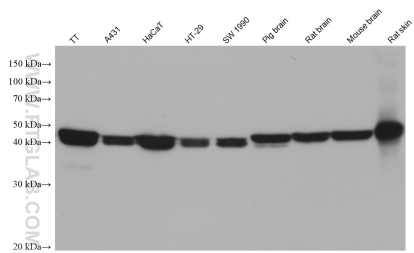
**Storage:**  
Store at -20°C. Stable for one year after shipment.  
**Storage Buffer:**  
PBS with 0.02% sodium azide and 50% glycerol pH 7.3.  
Aliquoting is unnecessary for -20°C storage

\*\*\* 20ul sizes contain 0.1% BSA

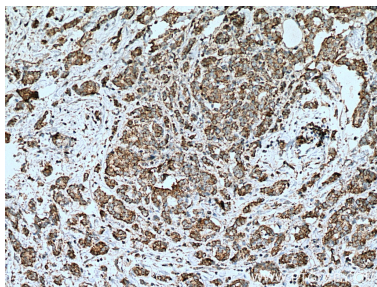
For technical support and original validation data for this product please contact:  
T: 1 (888) 4PTGLAB (1-888-478-4522) (toll free in USA), or 1(312) 455-8498 (outside USA)  
E: [proteintech@ptglab.com](mailto:proteintech@ptglab.com)  
W: [ptglab.com](http://ptglab.com)

This product is exclusively available under Proteintech Group brand and is not available to purchase from any other manufacturer.

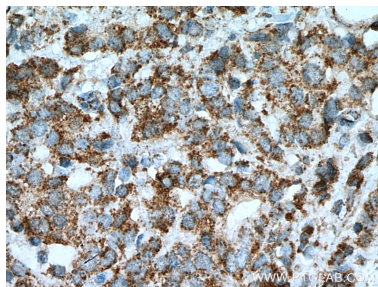
Selected Validation Data



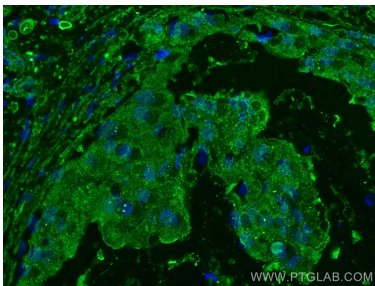
Various lysates were subjected to SDS PAGE followed by western blot with 67427-1-Ig (KLK11 antibody) at dilution of 1:20000 incubated at room temperature for 1.5 hours.



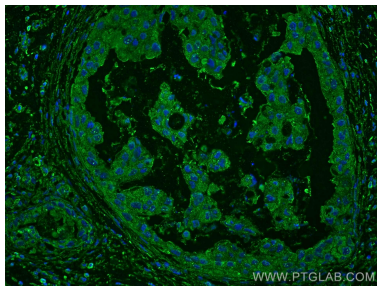
Immunohistochemical analysis of paraffin-embedded human breast cancer tissue slide using 67427-1-Ig (KLK11 antibody) at dilution of 1:1000 (under 10x lens). Heat mediated antigen retrieval with Tris-EDTA buffer (pH 9.0).



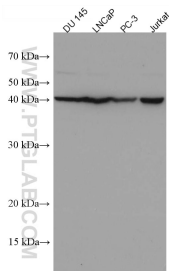
Immunohistochemical analysis of paraffin-embedded human breast cancer tissue slide using 67427-1-Ig (KLK11 antibody) at dilution of 1:1000 (under 40x lens). Heat mediated antigen retrieval with Tris-EDTA buffer (pH 9.0).



Immunofluorescent analysis of (4% PFA) fixed human breast cancer tissue using KLK11 antibody (67427-1-Ig, Clone: 1E2B4 ) at dilution of 1:400 and CoraLite®488-Conjugated AffiniPure Goat Anti-Mouse IgG(H+L).



Immunofluorescent analysis of (4% PFA) fixed human breast cancer tissue using KLK11 antibody (67427-1-Ig, Clone: 1E2B4 ) at dilution of 1:400 and CoraLite®488-Conjugated AffiniPure Goat Anti-Mouse IgG(H+L).



Various lysates were subjected to SDS PAGE followed by western blot with 67427-1-Ig (KLK11 antibody) at dilution of 1:3000 incubated at room temperature for 1.5 hours.