

For Research Use Only

AMPD2 Monoclonal antibody

Catalog Number: 67430-1-Ig



Basic Information

Catalog Number: 67430-1-Ig	GenBank Accession Number: BC007711	Purification Method: Protein A purification
Size: 150ul, Concentration: 1900 ug/ml by 271 Nanodrop and 1000 ug/ml by Bradford method using BSA as the standard;	GeneID (NCBI): Q01433	CloneNo.: 2C4C1
Source: Mouse	UNIPROT ID: Q01433	Recommended Dilutions: WB 1:3000-1:20000 IHC 1:500-1:2000 IF/ICC 1:200-1:800
Isotype: IgG2b	Full Name: adenosine monophosphate deaminase 2 (isoform L)	
Immunogen Catalog Number: AG8433	Calculated MW: 879aa, 101 kDa; 798aa, 92 kDa	
	Observed MW: 101 kDa	

Applications

Tested Applications: WB, IHC, IF/ICC, ELISA	Positive Controls:
Species Specificity: Human, Mouse, Rat	WB : HSC-T6 cells, 4T1 cells, HeLa cells, HepG2 cells, L02 cells, Neuro-2a cells
Note-IHC: suggested antigen retrieval with TE buffer pH 9.0; (*) Alternatively, antigen retrieval may be performed with citrate buffer pH 6.0	IHC : human liver cancer tissue, IF/ICC : HepG2 cells,

Background Information

Adenosine monophosphate deaminase (AMPD) catalyzes the deamination of AMP to IMP and plays an important role in the purine nucleotide cycle. Three AMPDs are present in mammals named AMPD1/2/3. AMPD2 is the main activity present in adult human liver and is widely expressed in non-muscle tissues and cells (PMID: 8526848). AMPD2 has some isoforms with the molecular mass of 88-101 kDa.

Storage

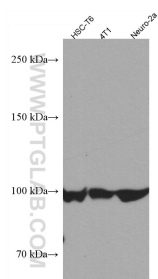
Storage:
Store at -20°C.
Storage Buffer:
PBS with 0.02% sodium azide and 50% glycerol pH 7.3.
Aliquoting is unnecessary for -20°C storage

*** 20ul sizes contain 0.1% BSA

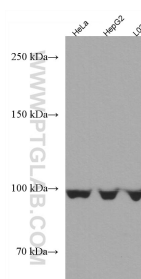
For technical support and original validation data for this product please contact:
T: 1 (888) 4PTGLAB (1-888-478-4522) (toll free in USA), or 1(312) 455-8498 (outside USA)
E: proteintech@ptglab.com
W: ptglab.com

This product is exclusively available under Proteintech Group brand and is not available to purchase from any other manufacturer.

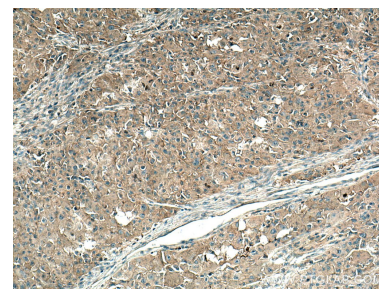
Selected Validation Data



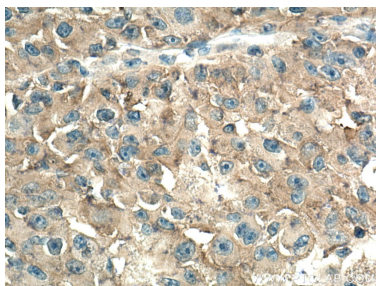
HSC-T6 cells were subjected to SDS PAGE followed by western blot with 67430-1-Ig (AMPD2 antibody) at dilution of 1:10000 incubated at room temperature for 1.5 hours.



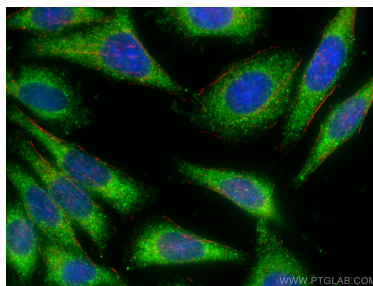
Various lysates were subjected to SDS PAGE followed by western blot with 67430-1-Ig (AMPD2 antibody) at dilution of 1:10000 incubated at room temperature for 1.5 hours.



Immunohistochemical analysis of paraffin-embedded human liver cancer tissue slide using 67430-1-Ig (AMPD2 antibody) at dilution of 1:1000 (under 10x lens). Heat mediated antigen retrieval with Tris-EDTA buffer (pH 9.0).



Immunohistochemical analysis of paraffin-embedded human liver cancer tissue slide using 67430-1-Ig (AMPD2 antibody) at dilution of 1:1000 (under 40x lens). Heat mediated antigen retrieval with Tris-EDTA buffer (pH 9.0).



Immunofluorescent analysis of (-20°C Ethanol) fixed HepG2 cells using AMPD2 antibody (67430-1-Ig, Clone: 2C4C1) at dilution of 1:400 and CoraLite® 488-Conjugated Goat Anti-Mouse IgG(H+L), CL594-Phalloidin (red).