

For Research Use Only

CYP20A1 Monoclonal antibody

Catalog Number: 67433-1-Ig



Basic Information

Catalog Number: 67433-1-Ig	GenBank Accession Number: BC020616	Purification Method: Protein G purification
Size: 150ul, Concentration: 500 µg/ml by Bradford method using BSA as the standard;	GeneID (NCBI): 57404	CloneNo.: 2A9E2
Source: Mouse	Full Name: cytochrome P450, family 20, subfamily A, polypeptide 1	Recommended Dilutions: WB 1:5000-1:50000 IHC 1:250-1:1000 IF 1:200-1:800
Isotype: IgG1	Calculated MW: 462 aa, 52 kDa	
Immunogen Catalog Number: AG9715	Observed MW: 49-52 kDa	

Applications

Tested Applications:

IF, IHC, WB, ELISA

Species Specificity:

Human, Mouse, Rat

Note-IHC: suggested antigen retrieval with TE buffer pH 9.0; (*) Alternatively, antigen retrieval may be performed with citrate buffer pH 6.0

Positive Controls:

WB: LNCaP cells, HeLa cells, HEK-293 cells, HepG2 cells, Jurkat cells, HSC-T6 cells, NIH/3T3 cells, 4T1 cells, K-562 cells, Neuro-2a cells

IHC: human liver cancer tissue,

IF: HeLa cells,

Background Information

Storage

Storage:

Store at -20°C. Stable for one year after shipment.

Storage Buffer:

PBS with 0.02% sodium azide and 50% glycerol pH 7.3.

Aliquoting is unnecessary for -20°C storage

*** 20ul sizes contain 0.1% BSA

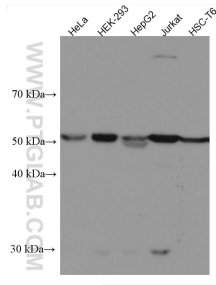
For technical support and original validation data for this product please contact:

T: 1 (888) 4PTGLAB (1-888-478-4522) (toll free in USA), or 1(312) 455-8498 (outside USA)

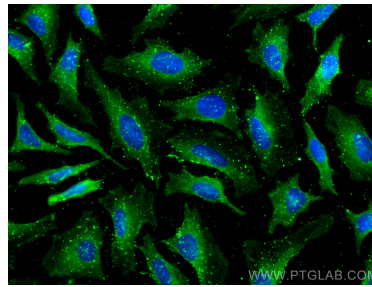
E: proteintech@ptglab.com
W: ptglab.com

This product is exclusively available under Proteintech Group brand and is not available to purchase from any other manufacturer.

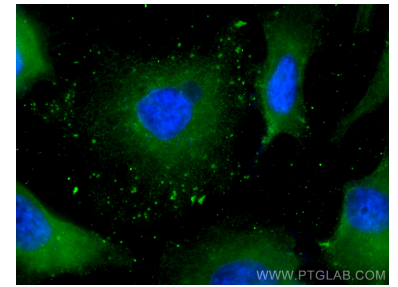
Selected Validation Data



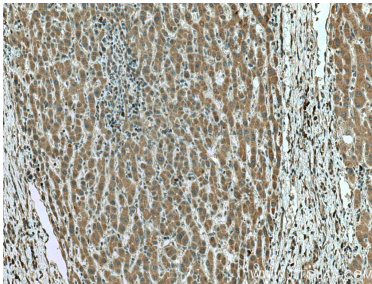
Various lysates were subjected to SDS PAGE followed by western blot with 67433-1-Ig (CYP20A1 antibody) at dilution of 1:5000 incubated at room temperature for 1.5 hours.



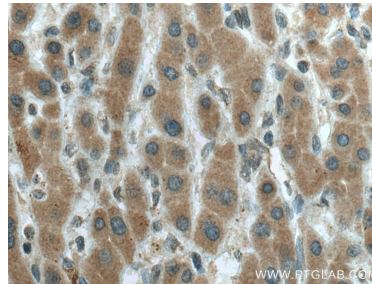
Immunofluorescent analysis of (-20°C Methanol) fixed HeLa cells using CYP20A1 antibody (67433-1-Ig, Clone: 2A9E2) at dilution of 1:400 and CoraLite®488-Conjugated AffiniPure Goat Anti-Mouse IgG(H+L).



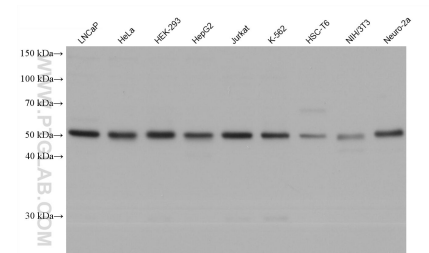
Immunofluorescent analysis of (-20°C Methanol) fixed HeLa cells using CYP20A1 antibody (67433-1-Ig, Clone: 2A9E2) at dilution of 1:400 and CoraLite®488-Conjugated AffiniPure Goat Anti-Mouse IgG(H+L).



Immunohistochemical analysis of paraffin-embedded human liver cancer tissue slide using 67433-1-Ig (CYP20A1 antibody) at dilution of 1:500 (under 10x lens). Heat mediated antigen retrieval with Tris-EDTA buffer (pH 9.0).



Immunohistochemical analysis of paraffin-embedded human liver cancer tissue slide using 67433-1-Ig (CYP20A1 antibody) at dilution of 1:500 (under 40x lens). Heat mediated antigen retrieval with Tris-EDTA buffer (pH 9.0).



Various lysates were subjected to SDS PAGE followed by western blot with 67433-1-Ig (CYP20A1 antibody) at dilution of 1:20000 incubated at room temperature for 1.5 hours.