

For Research Use Only

LIPG Monoclonal antibody

Catalog Number: 67434-1-Ig **1 Publications**



Basic Information

Catalog Number: 67434-1-Ig	GenBank Accession Number: BC060825	Purification Method: Protein G purification
Size: 150ul , Concentration: 2000 ug/ml by Nanodrop and 1000 ug/ml by Bradford method using BSA as the standard;	GeneID (NCBI): 9388	CloneNo.: 1B10B10
Source: Mouse	UNIPROT ID: Q9Y5X9	Recommended Dilutions: WB 1:2000-1:16000 IHC 1:200-1:800
Isotype: IgG1	Full Name: lipase, endothelial	
Immunogen Catalog Number: AG29482	Calculated MW: 57 kDa	
	Observed MW: 57 and 42 kDa	

Applications

Tested Applications: WB, IHC, ELISA	Positive Controls:
Cited Applications: WB, IHC, CoIP	WB : Caco-2 cells, HaCaT cells, HepG2 cells, HT-29 cells, human placenta tissue, MCF-7 cells, MDA-MB-468 cells
Species Specificity: Human	IHC : human prostate cancer tissue,
Cited Species: human	
Note-IHC: suggested antigen retrieval with TE buffer pH 9.0; (*) Alternatively, antigen retrieval may be performed with citrate buffer pH 6.0	

Notable Publications

Author	Pubmed ID	Journal	Application
Qun Zhang	39069526	Cancer Gene Ther	WB,IHC,CoIP

Storage

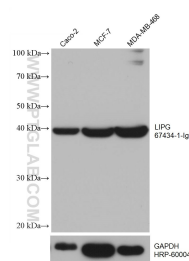
Storage:
Store at -20°C. Stable for one year after shipment.
Storage Buffer:
PBS with 0.02% sodium azide and 50% glycerol pH 7.3.
Aliquoting is unnecessary for -20°C storage

*** 20ul sizes contain 0.1% BSA

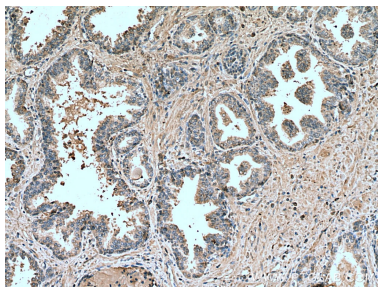
For technical support and original validation data for this product please contact:
T: 1 (888) 4PTGLAB (1-888-478-4522) (toll free in USA), or 1(312) 455-8498 (outside USA)
E: proteintech@ptglab.com
W: ptglab.com

This product is exclusively available under Proteintech Group brand and is not available to purchase from any other manufacturer.

Selected Validation Data



Various lysates were subjected to SDS PAGE followed by western blot with 67434-1-Ig (LIPG antibody) at dilution of 1:8000 incubated at room temperature for 1.5 hours. The membrane was stripped and reblotted with HRP-conjugated GAPDH Monoclonal antibody (HRP-60004) as loading control.



Immunohistochemical analysis of paraffin-embedded human prostate cancer tissue slide using 67434-1-Ig (LIPG antibody) at dilution of 1:400 (under 10x lens). Heat mediated antigen retrieval with Tris-EDTA buffer (pH 9.0).